

Primary Roll by Year Group & Total % Percentage Capacity Full: January 2021 (2020/21)

Appendix B: Table 1

PA	School Name	PAN	National Curriculum Year Group							Total Roll	
			R	1	2	3	4	5	6		
Planning Area 1	West Hampstead (Beckford)	60	56	47	48	54	59	59	56	379	
	Christ Church Hampstead NW3	28	28	28	28	26	28	28	24	190	
	Emmanuel	30	28	30	32	29	30	30	29	208	
	Fitzjohn's	30	30	29	30	29	30	30	29	207	
	Hampstead Parochial (1FE Y6)	30	30	30	29	31	28	31	53	232	
	Kingsgate (2FE Y5, 1FE Y6)	90	88	86	82	82	85	106	87	616	
	New End	60	36	43	50	44	43	37	47	300	
	St Eugene de Mazenod	30	30	28	30	29	29	29	29	204	
	St Luke's Free School	15	15	14	15	14	14	14	12	98	
	St Mary Kilburn	30	30	30	27	28	30	26	30	201	
	Planning Area 1 Primary Schools	403	371	365	371	366	376	390	396	2,635	
	% Capacity Full		92%	91%	92%	91%	87%	90%	92%		
	Number of Unfilled School Places		32	38	32	37	56	42	36		
Planning Area 2	Brookfield	60	35	50	59	53	59	60	60	376	
	Carlton	60	17	18	23	27	24	29	52	190	
	Eleanor Palmer	30	30	30	30	30	30	30	30	210	
	Fleet	30	30	29	30	26	30	29	30	204	
	Gospel Oak	60	60	58	56	57	58	59	59	407	
	Kentish Town	30	31	30	30	29	30	30	29	209	
	St Dominic's	45	19	16	29	19	25	28	25	161	
	St Patrick	30	29	24	24	25	25	30	28	185	
	Torriano	58	58	59	58	60	59	58	59	411	
	Planning Area 2 Primary Schools	403	309	314	339	326	340	353	372	2,353	
	% Capacity Full		77%	78%	84%	81%	84%	88%	92%		
	Number of Unfilled School Places		94	89	64	77	63	50	33		
	Planning Area 3	Abacus Belsize Free School	30	30	29	25	26	15	21	18	164
Brecknock		60	40	52	33	30	43	56	56	310	
Hawley		30	29	28	30	28	29	26	25	195	
Holy Trinity & St Silas		30	30	30	30	30	30	30	30	210	
Holy Trinity NW3		27	28	25	24	26	26	26	29	184	
Primrose Hill		60	59	57	58	54	53	58	57	396	
Rhyl		60	43	33	29	44	44	56	43	292	
Rosary		45	43	33	38	42	39	45	38	278	
St Paul		30	29	27	26	28	29	29	28	196	
Planning Area 3 Primary Schools		372	331	314	293	308	308	347	324	2,225	
% Capacity Full			89%	84%	79%	83%	83%	93%	87%		
Number of Unfilled School Places			41	58	79	64	64	25	48		
Planning Area 4		Christ Church NW1	30	26	30	25	30	27	31	29	198
	Edith Neville	30	27	17	17	26	23	27	29	166	
	King's Cross Academy	60	59	60	54	59	57	58		347	
	Netley	60	41	44	36	42	54	61	53	331	
	Our Lady's	30	22	24	30	38	37	45	43	239	
	Richard Cobden	60	57	49	35	56	50	55	60	362	
	St Mary & St Pancras	30	22	30	26	28	25	28	27	186	
	St Michael	30	7	16	14	13	31	27	26	134	
	Planning Area 4 Primary Schools	330	261	270	237	292	304	332	267	1,963	
	% Capacity Full		79%	82%	72%	88%	92%	101%	99%		
	Number of Unfilled School Places		69	60	93	38	26	-2	3		
	Planning Area 5	Argyle	60	55	37	35	29	51	45	47	299
		Christopher Hatton	30	30	30	28	30	30	29	30	207
St Albans		30	19	20	23	20	20	29	22	153	
St George the Martyr		30	30	30	30	29	30	29	25	203	
St Josephs		30	22	28	22	25	23	26	28	174	
Planning Area 5 Primary Schools		180	156	145	138	133	154	158	152	1,036	
% Capacity Full			87%	81%	77%	74%	86%	88%	84%		
Number of Unfilled School Places			24	35	42	47	26	22	28		
Total	All Camden Primary Schools	1,688	1,428	1,408	1,378	1,425	1,482	1,580	1,511	10,212	
	% Capacity Full		85%	83%	82%	84%	86%	92%	91%		
	Number of Unfilled School Places		260	280	310	263	235	137	148		

Source: January 2021 DfE School Census / PAN - Planned Admission Number / PA - Planning Area / Numbers and % percentages are clearly illustrated

Historic bulge class years clearly highlighted

Percentage capacity full calculations are based on PAN: any permanently unused capacity or temporary capping is not included

Primary Reception Trend 2016/17 to 2020/21: Admission Number, Number on Roll, Unfilled Places, % Unfilled Places

Appendix B, Table 2A

School Name	Admission Number					Number on Roll in Reception					Number Unfilled Reception Places					Percentage Unfilled Reception Places %				
	16/17	17/18	18/19	19/20	20/21	16/17	17/18	18/19	19/20	20/21	16/17	17/18	18/19	19/20	20/21	16/17	17/18	18/19	19/20	20/21
West Hampstead (Beckford)	60	60	60	60	60	54	57	55	47	56	6	3	5	13	4	10.0%	5.0%	8.3%	21.7%	6.7%
Christ Church NW3	27	28	28	28	28	27	28	28	28	28	0	0	0	0	0	0.0%	0.0%	0.0%	0.0%	0.0%
Emmanuel	30	30	30	30	30	28	30	30	30	28	2	0	0	0	2	6.7%	0.0%	0.0%	0.0%	6.7%
Fitzjohn's	30	30	30	30	30	30	28	30	29	30	0	2	0	1	0	0.0%	6.7%	0.0%	3.3%	0.0%
Hampstead Parochial	30	30	30	30	30	30	30	30	30	30	0	0	0	0	0	0.0%	0.0%	0.0%	0.0%	0.0%
Kingsgate	120	90	90	90	90	91	78	90	83	88	29	12	0	7	2	24.2%	13.3%	0.0%	7.8%	2.2%
New End	60	60	60	60	60	54	50	38	48	36	6	10	22	12	24	10.0%	16.7%	36.7%	20.0%	40.0%
St Eugene de Mazenod	30	30	30	30	30	30	30	29	30	30	0	0	1	0	0	0.0%	0.0%	3.3%	0.0%	0.0%
St Luke's	15	15	15	15	15	15	16	15	15	15	0	-1	0	0	0	0.0%	-6.7%	0.0%	0.0%	0.0%
St Mary's Kilburn	30	30	30	30	30	29	30	30	28	30	1	0	0	2	0	3.3%	0.0%	0.0%	6.7%	0.0%
Planning Area 1 Total	432	403	403	403	403	388	377	375	368	371	44	26	28	35	32	10.2%	6.5%	6.9%	8.7%	7.9%
Brookfield	60	60	60	60	60	60	57	50	57	35	0	3	10	3	25	0.0%	5.0%	16.7%	5.0%	41.7%
Carlton	60	60	60	60	60	26	33	28	29	17	34	27	32	31	43	56.7%	45.0%	53.3%	51.7%	71.7%
Eleanor Palmer	30	30	30	30	30	30	30	31	30	30	0	0	-1	0	0	0.0%	0.0%	-3.3%	0.0%	0.0%
Fleet	30	30	30	30	30	29	30	26	30	30	1	0	4	0	0	3.3%	0.0%	13.3%	0.0%	0.0%
Gospel Oak	60	60	60	60	60	60	60	59	60	60	0	0	1	0	0	0.0%	0.0%	1.7%	0.0%	0.0%
Kentish Town	30	30	30	30	30	30	30	30	30	31	0	0	0	0	-1	0.0%	0.0%	0.0%	0.0%	-3.3%
St Dominic's	45	45	45	45	45	36	26	35	20	19	9	19	10	25	26	20.0%	42.2%	22.2%	55.6%	57.8%
St Patrick's	30	30	30	30	30	26	28	23	27	29	4	2	7	3	1	13.3%	6.7%	23.3%	10.0%	3.3%
Torriano	58	58	58	58	58	56	57	59	59	58	2	1	-1	-1	0	3.4%	1.7%	-1.7%	-1.7%	0.0%
Planning Area 2 Total	403	403	403	403	403	353	351	341	342	309	50	52	62	61	94	12.4%	12.9%	15.4%	15.1%	23.3%
Abacus Belsize	30	30	30	30	30	28	29	30	29	30	2	1	0	1	0	6.7%	3.3%	0.0%	3.3%	0.0%
Brecknock	60	60	60	60	60	35	31	42	55	40	25	29	18	5	20	41.7%	48.3%	30.0%	8.3%	33.3%
Hawley	30	30	30	30	30	30	30	30	30	29	0	0	0	0	1	0.0%	0.0%	0.0%	0.0%	3.3%
Holy Trinity NW1	30	30	30	30	30	29	27	30	30	30	1	3	0	0	0	3.3%	10.0%	0.0%	0.0%	0.0%
Holy Trinity NW3	27	27	27	27	27	24	27	25	25	28	3	0	2	2	-1	11.1%	0.0%	7.4%	7.4%	-3.7%
Primrose Hill	60	60	60	60	60	60	60	58	60	59	0	0	2	0	1	0.0%	0.0%	3.3%	0.0%	1.7%
Rhyl	60	60	60	60	60	48	45	40	31	43	12	15	20	29	17	20.0%	25.0%	33.3%	48.3%	28.3%
Rosary	45	45	45	45	45	44	45	44	31	43	1	0	1	14	2	2.2%	0.0%	2.2%	31.1%	4.4%
St Paul's	30	30	30	30	30	30	30	30	30	29	0	0	0	0	1	0.0%	0.0%	0.0%	0.0%	3.3%
Planning Area 3 Total	372	372	372	372	372	328	324	329	321	331	44	48	43	51	41	11.8%	12.9%	11.6%	13.7%	11.0%
Christ Church NW1	30	30	30	30	30	25	28	22	30	26	5	2	8	0	4	16.7%	6.7%	26.7%	0.0%	13.3%
Edith Neville	30	30	30	30	30	30	24	16	19	27	0	6	14	11	3	0.0%	20.0%	46.7%	36.7%	10.0%
King's Cross Academy	60	60	60	60	60	60	60	60	58	59	0	0	0	2	1	0.0%	0.0%	0.0%	3.3%	1.7%
Netley	60	60	60	60	60	59	54	36	43	41	1	6	24	17	19	1.7%	10.0%	40.0%	28.3%	31.7%
Our Lady's	30	30	30	30	30	25	26	26	26	22	5	4	4	4	8	16.7%	13.3%	13.3%	13.3%	26.7%
Richard Cobden	60	60	60	60	60	55	49	42	55	57	5	11	18	5	3	8.3%	18.3%	30.0%	8.3%	5.0%
St Aloysius (CLOSED)	60	60	60			43	32	22			17	28	38			28.3%	46.7%	63.3%		
St Mary & St Pancras	30	30	30	30	30	30	30	29	30	22	0	0	1	0	8	0.0%	0.0%	3.3%	0.0%	26.7%
St Michael's	30	30	30	30	30	20	16	13	17	7	10	14	17	13	23	33.3%	46.7%	56.7%	43.3%	76.7%
Planning Area 4 Total	390	390	390	330	330	347	319	266	278	261	43	71	124	52	69	11.0%	18.2%	31.8%	15.8%	20.9%
Argyle	60	60	60	60	60	60	46	39	40	55	0	14	21	20	5	0.0%	23.3%	35.0%	33.3%	8.3%
Christopher Hatton	30	30	30	30	30	30	30	30	29	30	0	0	0	1	0	0.0%	0.0%	0.0%	3.3%	0.0%
St Alban's	30	30	30	30	30	29	27	23	28	19	1	3	7	2	11	3.3%	10.0%	23.3%	6.7%	36.7%
St George the Martyr	30	30	30	30	30	30	30	29	30	30	0	0	1	0	0	0.0%	0.0%	3.3%	0.0%	0.0%
St Joseph's	30	30	30	30	30	30	30	24	30	22	0	0	6	0	8	0.0%	0.0%	20.0%	0.0%	26.7%
Planning Area 5 Total	180	180	180	180	180	179	163	145	157	156	1	17	35	23	24	0.6%	9.4%	19.4%	12.8%	13.3%
Camden Primary Total	1,777	1,748	1,748	1,688	1,688	1,595	1,534	1,456	1,466	1,428	182	214	292	222	260	10.2%	12.2%	16.7%	13.2%	15.4%

Information

YR shown for all Camden schools, Admission Numbers from Admission School Booklets/Schools

Actual School Rolls based on DfE January School Census (main count) in all years / Numbers and % percentages are clearly illustrated / St Aloysius RC primary school closed in December 2019

Percentage unplaced calculations are based on PAN: any permanently unused capacity or temporary capping is not included

Key to Conditional Formatting (% unfilled places) - numbers are rounded which may appear to affect some conditional formatting - the rounding may not be fully visible

The Department for Education (DfE) provides guidance suggesting the efficient operation of the school system and to give space for the expression of parental preference, authorities should target 5% surplus within their area, conditional formatting reflects this.

GREEN - surplus school places equal or under 5.0%
AMBER - surplus school places between 5.01% and 10.0%
RED - surplus school places equal or over 10.01%

Primary Reception to Year 6 Trend 2016/17 to 2020/21: Admission Number, Number on Roll, Unfilled Places, % Unfilled Places

Appendix B, Table 2B

School Name	Admission Number					Number on Roll in YR-6					Number Unfilled YR-6 Places					Percentage Unfilled YR-6 Places %				
	16/17	17/18	18/19	19/20	20/21	16/17	17/18	18/19	19/20	20/21	16/17	17/18	18/19	19/20	20/21	16/17	17/18	18/19	19/20	20/21
West Hampstead (Beckford)	420	420	420	420	420	407	403	385	385	379	13	17	35	35	41	3.1%	4.0%	8.3%	8.3%	9.8%
Christ Church NW3	189	190	191	192	193	187	192	195	190	190	2	-2	-4	2	3	1.1%	-1.1%	-2.1%	1.0%	1.6%
Emmanuel	225	240	240	210	210	221	240	240	210	208	4	0	0	0	2	1.8%	0.0%	0.0%	0.0%	1.0%
Fitzjohn's	210	210	210	210	210	206	203	203	205	207	4	7	7	5	3	1.9%	3.3%	3.3%	2.4%	1.4%
Hampstead Parochial	240	240	240	240	240	233	229	229	233	232	7	11	11	7	8	2.9%	4.6%	4.6%	2.9%	3.3%
Kingsgate	630	660	690	690	690	590	608	638	633	616	40	52	52	57	74	6.3%	7.9%	7.5%	8.3%	10.7%
New End	420	420	420	420	420	399	375	338	330	300	21	45	82	90	120	5.0%	10.7%	19.5%	21.4%	28.6%
St Eugene de Mazenod	210	210	210	210	210	210	202	206	203	204	0	8	4	7	6	0.0%	3.8%	1.9%	3.3%	2.9%
St Luke's	90	105	105	105	105	92	105	97	98	98	-2	0	8	7	7	-2.2%	0.0%	7.6%	6.7%	6.7%
St Mary's Kilburn	210	210	210	210	210	202	202	198	201	201	8	8	12	9	9	3.8%	3.8%	5.7%	4.3%	4.3%
Planning Area 1 Total	2,844	2,905	2,936	2,907	2,908	2,747	2,759	2,729	2,688	2,635	97	146	207	219	273	3.4%	5.0%	7.1%	7.5%	9.4%
Brookfield	420	420	420	420	420	405	403	397	397	376	15	17	23	23	44	3.6%	4.0%	5.5%	5.5%	10.5%
Carlton	420	420	420	420	420	322	299	266	235	190	98	121	154	185	230	23.3%	28.8%	36.7%	44.0%	54.8%
Eleanor Palmer	210	210	210	210	210	210	210	212	209	210	0	0	-2	1	0	0.0%	0.0%	-1.0%	0.5%	0.0%
Fleet	210	210	210	210	210	203	205	202	196	204	7	5	8	14	6	3.3%	2.4%	3.8%	6.7%	2.9%
Gospel Oak	420	420	420	420	420	417	418	415	416	407	3	2	5	4	13	0.7%	0.5%	1.2%	1.0%	3.1%
Kentish Town	210	210	210	210	210	211	210	211	211	209	-1	0	-1	-1	1	-0.5%	0.0%	-0.5%	-0.5%	0.5%
St Dominic's	315	315	315	315	315	244	220	207	186	161	71	95	108	129	154	22.5%	30.2%	34.3%	41.0%	48.9%
St Patrick's	210	210	210	210	210	204	197	187	185	185	6	13	23	25	25	2.9%	6.2%	11.0%	11.9%	11.9%
Torriano	416	414	412	410	408	411	406	413	412	411	5	8	-1	-2	-3	1.2%	1.9%	-0.2%	-0.5%	-0.7%
Planning Area 2 Total	2,831	2,829	2,827	2,825	2,823	2,627	2,568	2,510	2,447	2,353	204	261	317	378	470	7.2%	9.2%	11.2%	13.4%	16.6%
Abacus Belsize	120	150	180	210	210	101	121	143	171	164	19	29	37	39	46	15.8%	19.3%	20.6%	18.6%	21.9%
Brecknock	420	420	420	420	420	365	343	350	334	310	55	77	70	86	110	13.1%	18.3%	16.7%	20.5%	26.2%
Hawley	120	150	180	210	210	120	143	163	197	195	0	7	17	13	15	0.0%	4.7%	9.4%	6.2%	7.1%
Holy Trinity NW1	210	210	210	210	210	208	205	210	209	210	2	5	0	1	0	1.0%	2.4%	0.0%	0.5%	0.0%
Holy Trinity NW3	189	189	189	189	189	180	183	176	182	184	9	6	13	7	5	4.8%	3.2%	6.9%	3.7%	2.6%
Primrose Hill	420	420	420	420	420	416	411	413	405	396	4	9	7	15	24	1.0%	2.1%	1.7%	3.6%	5.7%
Rhyl	420	420	420	420	420	390	369	358	316	292	30	51	62	104	128	7.1%	12.1%	14.8%	24.8%	30.5%
Rosary	315	315	315	315	315	295	297	294	281	278	20	18	21	34	37	6.3%	5.7%	6.7%	10.8%	11.7%
St Paul's	210	210	210	210	210	208	208	205	206	196	2	2	5	4	14	1.0%	1.0%	2.4%	1.9%	6.7%
Planning Area 3 Total	2,424	2,484	2,544	2,604	2,604	2,283	2,280	2,312	2,301	2,225	141	204	232	303	379	5.8%	8.2%	9.1%	11.6%	14.6%
Christ Church NW1	210	210	210	210	210	197	200	198	197	198	13	10	12	13	12	6.2%	4.8%	5.7%	6.2%	5.7%
Edith Neville	210	210	210	210	210	194	187	174	171	166	16	23	36	39	44	7.6%	11.0%	17.1%	18.6%	21.0%
King's Cross Academy	120	180	240	300	360	120	178	236	291	347	0	2	4	9	13	0.0%	1.1%	1.7%	3.0%	3.6%
Netley	420	420	420	420	420	401	388	362	341	331	19	32	58	79	89	4.5%	7.6%	13.8%	18.8%	21.2%
Our Lady's	210	210	210	210	210	197	195	196	268	239	13	15	14	-58	-29	6.2%	7.1%	6.7%	-27.6%	-13.8%
Richard Cobden	420	420	420	420	420	394	380	366	365	362	26	40	54	55	58	6.2%	9.5%	12.9%	13.1%	13.8%
St Aloysius (CLOSED)	420	420	420			371	307	246			49	113	174			11.7%	26.9%	41.4%		
St Mary & St Pancras	210	210	210	210	210	209	203	204	202	186	1	7	6	8	24	0.5%	3.3%	2.9%	3.8%	11.4%
St Michael's	210	210	210	210	210	176	173	147	167	134	34	37	63	43	76	16.2%	17.6%	30.0%	20.5%	36.2%
Planning Area 4 Total	2,430	2,490	2,550	2,190	2,250	2,259	2,211	2,129	2,002	1,963	171	279	421	188	287	7.0%	11.2%	16.5%	8.6%	12.8%
Argyle	420	420	420	420	420	357	330	314	312	299	63	90	106	108	121	15.0%	21.4%	25.2%	25.7%	28.8%
Christopher Hatton	210	210	210	210	210	210	206	203	207	207	0	4	7	3	3	0.0%	1.9%	3.3%	1.4%	1.4%
St Alban's	210	210	210	210	210	195	188	177	178	153	15	22	33	32	57	7.1%	10.5%	15.7%	15.2%	27.1%
St George the Martyr	210	210	210	210	210	205	202	200	203	203	5	8	10	7	7	2.4%	3.8%	4.8%	3.3%	3.3%
St Joseph's	210	210	210	210	210	196	188	183	180	174	14	22	27	30	36	6.7%	10.5%	12.9%	14.3%	17.1%
Planning Area 5 Total	1,260	1,260	1,260	1,260	1,260	1,163	1,114	1,077	1,080	1,036	97	146	183	180	224	7.7%	11.6%	14.5%	14.3%	17.8%
Camden Primary Total	11,789	11,968	12,117	11,786	11,845	11,079	10,932	10,757	10,518	10,212	710	1,036	1,360	1,268	1,633	6.0%	8.7%	11.2%	10.8%	13.8%

Information

YR-6 shown for all Camden schools, Admission Numbers from Admission School Booklets/Schools

Actual School Rolls based on DfE January School Census (main count) in all years / Numbers and % percentages are clearly illustrated / St Aloysius RC primary school closed in December 2019

Percentage unplaced calculations are based on PAN: any permanently unused capacity or temporary capping is not included

Key to Conditional Formatting (% unfilled places) - numbers are rounded which may appear to affect some conditional formatting - the rounding may not be fully visible

The Department for Education (DfE) provides guidance suggesting the efficient operation of the school system and to give space for the expression of parental preference, authorities should target 5% surplus within their area, conditional formatting reflects this.

GREEN - surplus school places equal or under 5.0%
AMBER - surplus school places between 5.01% and 10.0%
RED - surplus school places equal or over 10.01%

Reception Places Unfilled North-West Camden 2016/17 to 2020/21
Appendix B, Table 2C

North West Schools: <u>All</u> Planning Area 1, <u>Part</u> Planning Area 3; Swiss Cottage and Belsize wards	Planned Admission Number 2016/17 to 2020/21	Number of unfilled Reception places				
		2016/17	2017/18	2018/19	2019/20	2020/21
Abacus Belsize Free School	30	2	1	0	1	0
West Hampstead (Beckford)	60	6	3	5	13	4
Christ Church, Hampstead	27/28/28/28/28	0	0	0	0	0
Emmanuel	30	2	0	0	0	2
Fitzjohn's	30	0	2	0	1	0
Hampstead Parochial	30	0	0	0	0	0
Holy Trinity, NW3	27	3	0	2	2	-1
Kingsgate	120/90/90/90/90	29	12	0	7	2
New End	60	6	10	22	12	24
Rosary	45	1	0	1	14	2
St Eugene de Mazenod	30	0	0	1	0	0
St Luke's Free School	15	0	-1	0	0	0
St Mary's Kilburn	30	1	0	0	2	0
St Paul's	30	0	0	0	0	1
Total	564/535/535/535/535					
Net Unfilled		50	27	31	52	34
Percentage % Surplus		8.9%	5.0%	5.8%	9.7%	6.4%

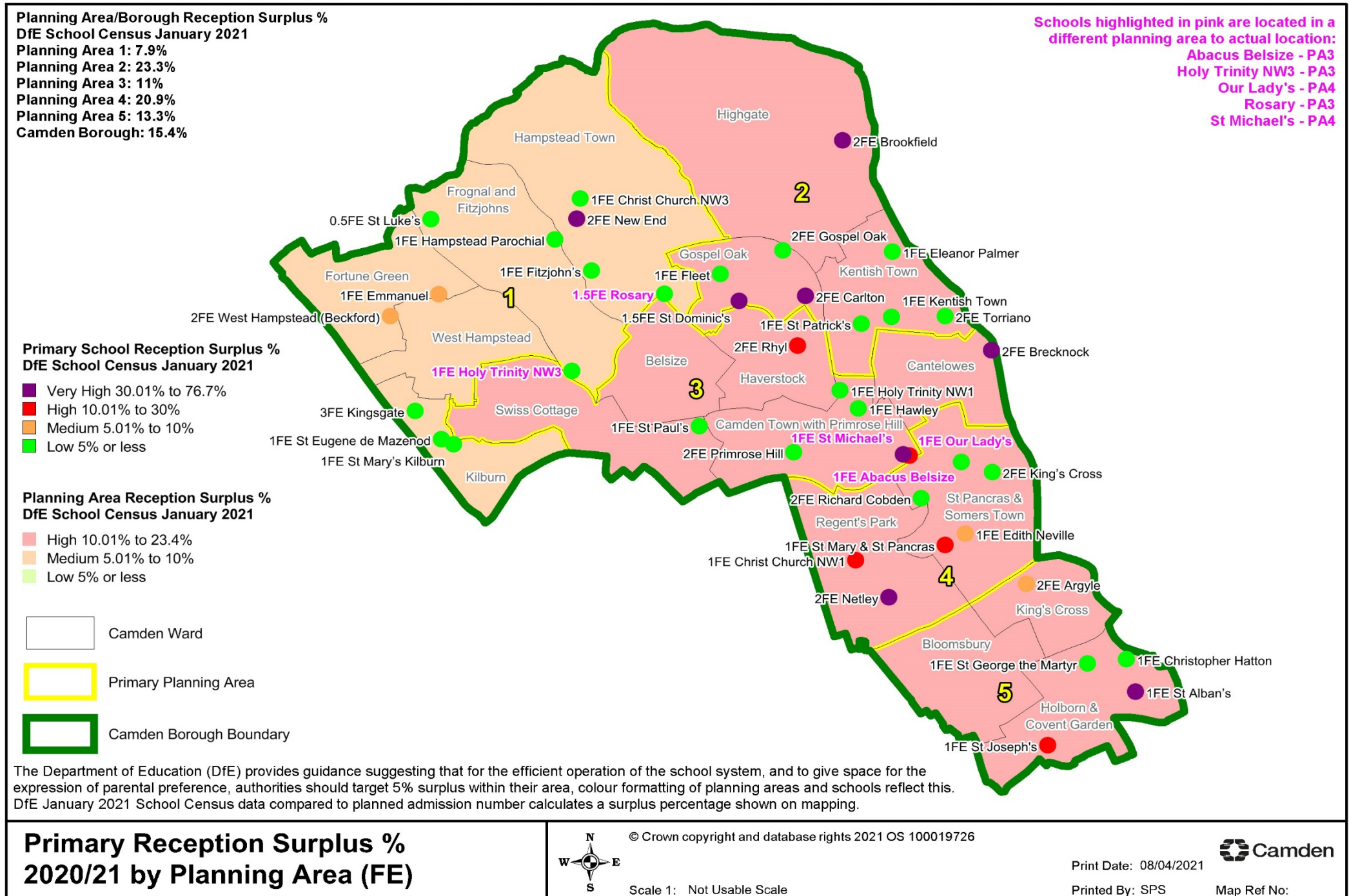
Source: January DfE School Census

PAN: any permanently unused capacity or temporary capping is not included

Numbers shown except for percentage surplus

Camden Reception Surplus Places % 2020/21 (PAN): DfE School Census January 2021

Appendix B, Table 2D



Primary School Actual Net Capacity 2021

Appendix B: Table 3A

DfE No	School	As At May NOR* (DfE)	Net Capacity 2021	Net Capacity % Surplus MAY
2036	West Hampstead (Beckford)	382	420	9.0
3323	Christ Church, Hampstead	186	180	0.0
3340	Emmanuel	204	210	2.9
2797	Fitzjohn's	205	210	2.4
3352	Hampstead Parochial	230	210	0.0
2843	Kingsgate	605	895	32.4
2438	New End	303	411	26.3
3649	St Eugene de Mazenod	200	210	4.8
2000	St Luke's Free School	99	105	5.7
3517	St Mary's Kilburn	200	210	4.8
Planning Area 1 Total		2,614	3,061	15.5
2078	Brookfield	372	420	11.4
2095	Carlton	175	420	58.3
2841	Eleanor Palmer	209	210	0.5
2219	Fleet	203	210	3.3
2775	Gospel Oak	417	420	0.7
3370	Kentish Town	208	210	1.0
3429	St Dominic	159	315	49.5
3560	St Patrick	191	210	9.0
2603	Torriano Primary	414	426	2.8
Planning Area 2 Total		2,348	2,841	17.4
2001	Abacus Belsize Free School	162	210	22.9
2065	Brecknock	312	411	24.1
2290	Hawley Primary	195	210	7.1
3361	Holy Trinity and Saint Silas	206	190	0.0
3359	Holy Trinity, NW3	184	168	0.0
2475	Primrose Hill	400	420	4.8
2502	Rhyl	308	420	26.7
3391	Rosary	277	315	12.1
3568	St Paul's	204	210	2.9
Planning Area 3 Total		2,248	2,554	13.2
3327	Christ Church, NW1	193	210	8.1
2184	Edith Neville	165	210	21.4
2002	King's Cross Academy	335	420	20.2
2436	Netley	342	420	18.6
3655	Our Lady	239	210	0.0
2507	Richard Cobden	363	420	13.6
3521	St Mary & St Pancras	190	210	9.5
3546	St Michael's	132	210	37.1
Planning Area 4 Total		1,959	2,310	16.5
2019	Argyle	293	420	30.2
2842	Christopher Hatton	206	210	1.9
3398	St Alban's	154	210	26.7
3441	St George the Martyr	201	210	4.3
3482	St Joseph	177	209	15.3
Planning Area 5 Total		1,031	1,259	18.1
Camden Primary Total		10,200	12,025	15.9

Information

School Net Capacity 2021 provided by Camden Property and Contracts

*Includes actual numbers on roll (NOR) from provisional May 2021 DfE School Census (YR-6), representing the 2020/21 cohort

Notes on higher NET CAPACITY surplus schools >20%: Kingsgate-1FE permanently unused capacity, New End-lower rolls recent years, Carlton-very low rolls, St Dominic's-very low rolls, Abacus-lower rolls older ages, Brecknock-low rolls, Rhyl-low rolls, King's Cross Academy-filling up, St Michael's-very low rolls, Argyle-low rolls, St Alban's lower recent rolls. It should also be noted Net Capacity figures for schools can change to accommodate building alterations/re-organising of space. St Aloysius RC Primary closed in December 2019 and is no longer included.

Covid: DfE SCAP & May DfE School Census CANCELLED 2020, Net Capacity surplus reported using mix existing/updated info & January DfE School Census

Primary Actual Net Capacity Surplus Trend 2017 to 2021

Appendix B: Table 3B

Camden Total		Percentage % Actual Net Capacity Surplus					Numbers 2021		
		2017	2018	2019	2020	2021	*Actual Pupils NOR MAY	Net Capacity	Actual Surplus NOR/NetCap
Primary	PA1	2.3	10.7	12.4	13.3	15.5	2,614	3,061	473
	PA2	7.3	9.9	11.7	13.9	17.4	2,348	2,841	493
	PA3	11.4	11.6	10.7	11.2	13.2	2,248	2,554	338
	PA4	17.8	19.2	23.7	15.8	16.5	1,959	2,310	380
	PA5	8.3	12.1	14.5	14.2	18.1	1,031	1,259	228
	Camden Primary Total	9.5	12.7	14.6	13.6	15.9	10,200	12,025	1,912

Information

School Net Capacity 2021 provided by Camden Property and Contracts

*Includes actual numbers on roll (NOR) from the provisional May 2021 DfE School Census (YR-6), representing the 2020/21 cohort

Percentage % net capacity surplus is based on the May DfE School Census 2017 to 2019, and 2021

Reception Primary Offer Day: School Analysis Trend 2019/20 to 2021/22
Appendix B, Table 4A

Offered Primary School	Admission Number*			Camden Resident			Non-Resident			All Offers			Camden Residents %			2021 Places		
	2019	2020	2021	2019	2020	2021	2019	2020	2021	2019	2020	2021	2019	2020	2021	Available	% full	Allocated
West Hampstead Primary School (Beckford)	60	60	60	54	55	50	6	5	10	60	60	60	90%	92%	83%	0	100%	0
Christ Church Primary School (Camden NW3)	28	28	28	23	25	24	5	3	4	28	28	28	82%	89%	86%	0	100%	0
Emmanuel C of E School	30	30	30	30	29	30	0	1	0	30	30	30	100%	97%	100%	0	100%	0
Fitzjohn's School	30	30	30	28	30	30	2	0	0	30	30	30	93%	100%	100%	0	100%	0
Hampstead Parochial C of E School	30	30	30	25	28	26	5	2	4	30	30	30	83%	93%	87%	0	100%	0
Kingsgate Primary School	90	90	90	71	77	72	19	13	18	90	90	90	79%	86%	80%	0	100%	8
New End Primary School	60	60	60	56	59	53	4	1	7	60	60	60	93%	98%	88%	0	100%	1
St Eugene de Mazenod RC School	30	30	30	21	22	22	9	8	8	30	30	30	70%	73%	73%	0	100%	0
St Luke's C of E 'Free School'	15	15	15	12	14	10	3	1	5	15	15	15	80%	93%	67%	0	100%	0
St Mary's Kilburn CofE Primary School	30	30	30	23	25	27	7	5	3	30	30	30	77%	83%	90%	0	100%	0
Total Planning Area 1	403	403	403	343	364	344	60	39	59	403	403	403	85%	90%	85%	0	100%	9
Brookfield Primary School	60	60	60	44	27	46	16	13	13	60	40	59	73%	68%	78%	1	98%	5
Carlton Primary School (closed/merge with Rhyl)	60	60	0	53	60	0	0	0	0	53	60	0	100%	100%	n/a	n/a	n/a	n/a
Eleanor Palmer School	30	30	30	25	25	29	5	5	1	30	30	30	83%	83%	97%	0	100%	0
Fleet School	30	30	30	30	30	30	0	0	0	30	30	30	100%	100%	100%	0	100%	0
Gospel Oak Primary School	60	60	60	60	60	60	0	0	0	60	60	60	100%	100%	100%	0	100%	0
Kentish Town C of E Primary School #	30	30	30	26	30	29	1	0	0	27	30	29	96%	100%	100%	1	97%	0
St Dominic's RC Primary School	45	45	45	24	45	30	1	0	0	25	45	30	96%	100%	100%	15	67%	8
St Patrick's Roman Catholic Primary School	30	30	30	26	25	29	4	4	1	30	29	30	87%	86%	97%	0	100%	16
Torriano Primary School	58	58	58	39	42	43	19	16	15	58	58	58	67%	72%	74%	0	100%	0
Total Planning Area 2	403	403	343	327	344	296	46	38	30	373	382	326	88%	90%	91%	17	95%	29
Abacus Belsize 'Free School'	30	30	30	29	28	29	1	2	1	30	30	30	97%	93%	97%	0	100%	0
Brecknock Primary School	60	60	60	40	26	30	19	15	11	59	41	41	68%	63%	73%	19	68%	11
Hawley Primary School	30	30	30	30	30	30	0	0	0	30	30	30	100%	100%	100%	0	100%	0
Holy Trinity & St. Silas C of E Primary School	30	30	30	30	29	30	0	1	0	30	30	30	100%	97%	100%	0	100%	0
Holy Trinity C of E School (NW3)	27	27	27	27	26	26	0	1	1	27	27	27	100%	96%	96%	0	100%	0
Primrose Hill Primary School	60	60	60	58	59	59	2	1	1	60	60	60	97%	98%	98%	0	100%	0
Rhyl Primary School	30	60	60	30	60	59	0	0	1	30	60	60	100%	100%	98%	0	100%	14
Rosary RC Primary School	45	45	45	41	40	37	3	5	3	44	45	40	93%	89%	93%	5	89%	0
St Paul's CofE School	30	30	30	30	30	29	0	0	1	30	30	30	100%	100%	97%	0	100%	0
Total Planning Area 3	342	372	372	315	328	329	25	25	19	340	353	348	93%	93%	95%	24	94%	25
Christ Church C of E School (Camden NW1)	30	30	30	29	29	29	1	0	0	30	29	29	97%	100%	100%	1	97%	6
Edith Neville Primary School	30	30	30	21	29	26	1	1	0	22	30	26	95%	97%	100%	4	87%	2
King's Cross Academy	60	60	60	32	38	38	28	22	24	60	60	62	53%	63%	61%	-2	103%	0
Netley Primary School	60	60	60	45	39	59	0	0	1	45	39	60	100%	100%	98%	0	100%	0
Our Lady's RC Primary School	30	30	30	24	22	21	1	1	0	25	23	21	96%	96%	100%	9	70%	0
Richard Cobden Primary School	60	60	60	52	55	59	3	1	1	55	56	60	95%	98%	98%	0	100%	2
St Aloysius RC Primary School (closed)	30	0	0	15	n/a	n/a	0	n/a	n/a	15	n/a	n/a	100%	n/a	n/a	n/a	n/a	n/a
St Mary and St Pancras CofE School	30	30	30	30	26	28	0	0	1	30	26	29	100%	100%	97%	1	97%	2
St Michael's Camden Town CofE School	30	30	30	30	16	9	0	0	0	30	16	9	100%	100%	100%	21	30%	0
Total Planning Area 4	360	330	330	278	254	269	34	25	27	312	279	296	89%	91%	91%	34	90%	12
Argyle Primary School	60	60	60	35	55	41	2	3	2	37	58	43	95%	95%	95%	17	72%	0
Christopher Hatton School	30	30	30	23	28	25	7	2	5	30	30	30	77%	93%	83%	0	100%	0
St Alban's C of E Primary School	30	30	30	20	16	19	2	5	0	22	21	19	91%	76%	100%	11	63%	1
St George The Martyr Primary School	30	30	30	30	28	28	0	2	0	30	30	28	100%	93%	100%	2	93%	1
St Joseph's RC Primary School (Camden)	30	30	30	22	18	14	8	5	7	30	23	21	73%	78%	67%	9	70%	0
Total Planning Area 5	180	180	180	130	145	127	19	17	14	149	162	141	87%	90%	90%	39	78%	2
Total Camden Primary Offer	1,688	1,688	1,628	1,393	1,435	1,365	184	144	149	1,577	1,579	1,514	88%	91%	90%	114	93%	77
Other LA School Offer				191	173	157	0	0	0	191	173	157	100%	100%	100%			
Total Offers				1,584	1,608	1,522	184	144	149	1,768	1,752	1,671	90%	92%	91%			
Total Applicants				1,589	1,619	1,538	512	483	450	2,101	2,102	1,988	76%	77%	77%			
# No Offer (unplaced) / Other LA School				5	11	16	328	339	301	333	350	317	2%	3%	5%			
% No Offer (unplaced) / Other LA School				0%	1%	1%	64%	70%	67%	16%	17%	16%						

Source: Admissions Offer Day - 2019 (16th April) / 2020 (16th April) / 2021 (16th April) - THIS IS THE OFFER DAY POSITION ONLY - SEN & Late applicants are INCLUDED in this analysis

Notes: Permanent Changes: St Aloysius RC (PA4) closed December 2019 (2019/20) -2FE, Carlton Primary School will merge with Rhyl by formally closing Carlton Primary School as a legal entity (PA2) from July 2021 (impacting 2021/22) -2FE. Temporary PAN Changes in 2019/20: Carlton (PA2) -1FE PAN reduction after offer day, Rhyl (PA3) -1FE PAN reduction, St Aloysius RC (PA4) 1FE PAN reduction but later closure agreed. Unplaced non-residents: Camden is not responsible for finding places, these children may be allocated a school place by another borough / # Kentish Town primary includes i.e. 1 PD and 2 ASD / King's Cross Academy +2 over PAN 2021/22 due to EHCP & sibling

Reception Primary Offer Day: Camden Resident by Resident Planning Area Trend 2019/20 to 2021/22
Appendix B, Table 4B

Planning Area of Residence	2019/20 Offers			2020/21 Offers			2021/22 Offers		
	Offer Day Applicants - April 2019	Unplaced	Allocated	Offer Day Applicants - April 2020	Unplaced	Allocated	Offer Day Applicants - April 2021	Unplaced	Allocated
Planning Area 1	412	5	21	473	8	28	418	15	17
Planning Area 2	275	0	9	265	0	16	285	0	13
Planning Area 3	475	0	37	471	3	56	425	1	36
Planning Area 4	240	0	6	235	0	8	246	0	9
Planning Area 5	187	0	8	175	0	10	164	0	2
Total Camden Resident	1,589	5	81	1,619	11	118	1,538	16	77
<i>West Finchley Road (1)</i>	321	5	14	359	8	23	319	14	15

Source: Admissions Offer Day - 2019 (16th April) / 2020 (16th April) / 2021 (16th April) - ***OFFER DAY POSITION ONLY - SEN & Late applicants are INCLUDED in this analysis***

(1) West of Finchley Road Applicants (subset of the main total) i.e. Wards: Fortune Green, Kilburn, West Hampstead and half applicants from Swiss Cottage

PA1: Fortune Green, Frognal and Fitzjohns, Hampstead Town, Kilburn, West Hampstead. PA2: Gospel Oak, Highgate, Kentish Town.

PA3: Belsize, Camden Town with Primrose Hill, Cantelowes, Haverstock, Swiss Cottage. PA4: Regent's Park, St. Pancras and Somers Town.

PA5: Bloomsbury, Holborn and Covent Garden, King's Cross.

Borough Residence of Children Attending Camden Schools: Trend 2016/17 to 2020/21

Appendix B: Table 5A

Primary Reception to Year 6	2017		2018		2019		2020		2021	
	No.	%	No.	%	No.	%	No.	%	No.	%
Camden	9,868	89%	9,598	88%	9,353	87%	9,120	87%	8,815	86%
Islington	442	4%	496	5%	557	5%	576	5%	612	6%
Brent	319	3%	328	3%	335	3%	339	3%	352	3%
Barnet	214	2%	271	2%	252	2%	251	2%	226	2%
Haringey	66	1%	58	1%	54	1%	51	0%	44	0%
Westminster	60	1%	59	1%	76	1%	66	1%	67	1%
Enfield	15	0%	14	0%	10	0%	11	0%	3	0%
Hackney	15	0%	21	0%	27	0%	21	0%	15	0%
Other London Borough	67	1%	78	1%	73	1%	69	1%	67	1%
Outside London	13	0%	9	0%	20	0%	14	0%	11	0%
Camden Primary Total	11,079	100%	10,932	100%	10,757	100%	10,518	100%	10,212	100%

Source: January DfE School Census 2017 to 2021

Children attending Camden schools / Percentages are rounded / Numbers and percentages are clearly shown

Residence of Children Attending Camden Primary Schools: Percentage % Composition and Year Group Summary 2016/17 to 2020/21 Appendix B: Table 5B

PA	School Name	2017 %				2018 %				2019 %				2020 %				2021 %			
		CR		OBR		CR		OBR		CR		OBR		CR		OBR		CR		OBR	
		R	R-6	R	R-6	R	R-6	R	R-6	R	R-6	R	R-6	R	R-6	R	R-6	R	R-6	R	R-6
Planning Area 1	West Hampstead (Beckford)	87	80	13	20	86	80	14	20	89	82	11	18	77	82	23	18	89	83	11	17
	Christ Church NW3	85	80	15	20	86	81	14	19	89	77	11	23	82	81	18	19	86	79	14	21
	Emmanuel	96	91	4	9	97	90	3	10	90	90	10	10	100	93	0	7	96	92	4	8
	Fitzjohn's	93	94	7	6	96	93	4	7	100	94	0	6	100	95	0	5	90	92	10	8
	Hampstead Parochial	93	78	7	22	73	76	27	24	87	78	13	22	77	78	23	22	90	78	10	22
	Kingsgate	84	82	16	18	81	80	19	20	79	76	21	24	81	73	19	27	77	71	23	29
	New End	96	88	4	12	76	84	24	16	92	85	8	15	88	85	13	15	94	85	6	15
	St Eugene de Mazenod	67	67	33	33	50	62	50	38	62	60	38	40	70	63	30	37	67	61	33	39
	St Luke's Free School	80	66	20	34	44	63	56	37	73	66	27	34	73	67	27	33	93	69	7	31
	St Mary's Kilburn	83	79	17	21	90	78	10	22	90	82	10	18	75	80	25	20	77	78	23	22
	Planning Area 1	87	82	13	18	80	80	20	20	85	80	15	20	82	79	18	21	85	79	15	21
Planning Area 2	Brookfield	72	77	28	23	81	75	19	25	72	75	28	25	72	76	28	24	71	74	29	26
	Carlton	100	99	0	1	97	99	3	1	93	97	7	3	97	98	3	2	100	98	0	2
	Eleanor Palmer	77	75	23	25	73	75	27	25	87	75	13	25	73	72	27	28	83	74	17	26
	Fleet	100	100	0	0	100	99	0	1	100	100	0	0	97	98	3	2	100	96	0	4
	Gospel Oak	98	99	2	1	100	99	0	1	98	98	2	2	100	99	0	1	100	99	0	1
	Kentish Town	100	97	0	3	93	97	7	3	100	97	0	3	97	97	3	3	97	97	3	3
	St Dominic's	97	95	3	5	92	96	8	4	91	96	9	4	90	96	10	4	100	97	0	3
	St Patrick	96	91	4	9	86	90	14	10	96	90	4	10	93	92	7	8	86	92	14	8
	Torriano	91	83	9	17	68	82	32	18	75	80	25	20	61	76	39	24	72	73	28	27
	Planning Area 2	91	90	9	10	87	89	13	11	88	89	12	11	84	88	16	12	88	87	12	13
Planning Area 3	Abacus Belsize Free School	100	98	0	2	90	91	10	9	100	85	0	15	90	85	10	15	93	87	7	13
	Brecknock	63	78	37	22	74	72	26	28	64	67	36	33	67	67	33	33	63	67	38	33
	Hawley	97	97	3	3	100	97	0	3	100	96	0	4	97	95	3	5	100	98	0	2
	Holy Trinity & St Silas	97	97	3	3	100	97	0	3	90	94	10	6	100	95	0	5	97	93	3	7
	Holy Trinity NW3	100	96	0	4	100	93	0	7	100	96	0	4	96	98	4	2	96	98	4	2
	Primrose Hill	97	95	3	5	95	96	5	4	90	93	10	7	95	95	5	5	98	95	2	5
	Rhyl	100	98	0	2	98	99	2	1	100	99	0	1	100	99	0	1	98	98	2	2
	Rosary	89	86	11	14	93	87	7	13	84	85	16	15	94	86	6	14	84	87	16	13
	St Paul's	97	96	3	4	100	97	0	3	90	95	10	5	97	95	3	5	97	94	3	6
	Planning Area 3	93	92	7	8	94	91	6	9	90	89	10	11	91	90	9	10	91	90	9	10
Planning Area 4	Christ Church NW1	96	97	4	3	96	98	4	2	95	97	5	3	97	97	3	3	96	95	4	5
	Edith Neville	100	99	0	1	100	98	0	2	100	96	0	4	100	98	0	2	100	98	0	2
	King's Cross Academy	55	62	45	38	62	60	38	40	60	59	40	41	50	59	50	41	63	58	37	42
	Netley	98	99	2	1	98	98	2	2	100	98	0	2	100	99	0	1	100	100	0	0
	Our Lady's	92	91	8	9	96	92	4	8	96	91	4	9	96	92	4	8	95	94	5	6
	Richard Cobden	100	98	0	2	100	99	0	1	100	99	0	1	100	99	0	1	96	98	4	2
	St Aloysius (closed)	100	96	0	4	94	94	6	6	95	94	5	6								
	St Mary & St Pancras	100	100	0	0	100	99	0	1	100	99	0	1	100	99	0	1	100	99	0	1
	St Michael	100	95	0	5	94	94	6	6	100	96	0	4	100	94	0	6	100	96	0	4
	Planning Area 4	91	95	9	5	91	94	9	6	90	92	10	8	89	92	11	8	90	91	10	9
Planning Area 5	Argyle	95	97	5	3	98	95	2	5	100	96	0	4	98	96	3	4	95	97	5	3
	Christopher Hatton	73	80	27	20	90	82	10	18	83	80	17	20	79	79	21	21	97	81	3	19
	St Albans	69	83	31	17	89	85	11	15	83	84	17	16	89	85	11	15	79	85	21	15
	St George the Martyr	97	90	3	10	80	89	20	11	97	93	3	7	100	95	0	5	97	96	3	4
	St Joseph's	77	70	23	30	63	66	37	34	79	67	21	33	73	71	27	29	91	70	9	30
	Planning Area 5	84	86	16	14	85	85	15	15	90	86	10	14	89	87	11	13	93	87	7	13
Camden Primary Total		90	89	10	11	87	88	13	12	88	87	12	13	87	87	13	13	89	86	11	14

Source: January DfE School Census 2016/17 to 2020/21

Percentages are based on all pupils in reception or reception to year 6: **CR - Camden Resident / OBR - Other Borough Resident**

St Aloysius RC primary school closed in December 2019, historic data continues to be shown

Camden Residents in Other Borough Primary Schools: 2017 to 2021

Appendix B: Table 6

Borough Schools	2017 Reception to Year 6	2018 Reception to Year 6	2019 Reception to Year 6	2020 Reception to Year 6	2021 Reception to Year 6
Barking & Dagenham	0	0	0	0	<5
Barnet	87	99	79	77	80
Brent	194	230	239	259	257
City	0	0	0	0	0
Croydon	<5	0	0	0	0
Ealing	0	<5	<5	0	<5
Enfield		6	<5	<5	<5
Greenwich	0	<5	0	0	0
Hammersmith & Fulham	8	6	<5	<5	0
Hackney	27	19	19	15	16
Haringey	79	75	89	76	75
Harrow	<5	0	0	<5	<5
Hertfordshire	<5	<5	<5	0	0
Hounslow	0	0	0	0	0
Islington	260	274	283	301	302
Kensington & Chelsea	15	22	19	20	16
Lambeth			<5	<5	<5
Lewisham	<5	<5	0	<5	<5
Newham	<5	<5	<5	0	<5
Redbridge	<5	<5			0
Richmond	<5	<5	<5	0	0
Southwark	0	<5	<5	0	<5
Sutton	0	0	0	0	0
Tower Hamlets	0	0		<5	<5
Waltham Forest	<5	0	0	0	0
Wandsworth	0	0	0	0	<5
Westminster	810	758	727	666	603
Camden Residents Other Borough Total	1,495	1,506	1,479	1,427	1,369

Source: DfE School Census, January 2017-21 DfE summary

Blanks indicate borough not supplying resident data, academy data provided in later years / <5 indicates numbers less than or equal to 5

Camden residents attending other borough schools / includes all residents of primary age

Camden Planning Area 1 (North West) GLA School Roll Projections: Primary Age Forecasts

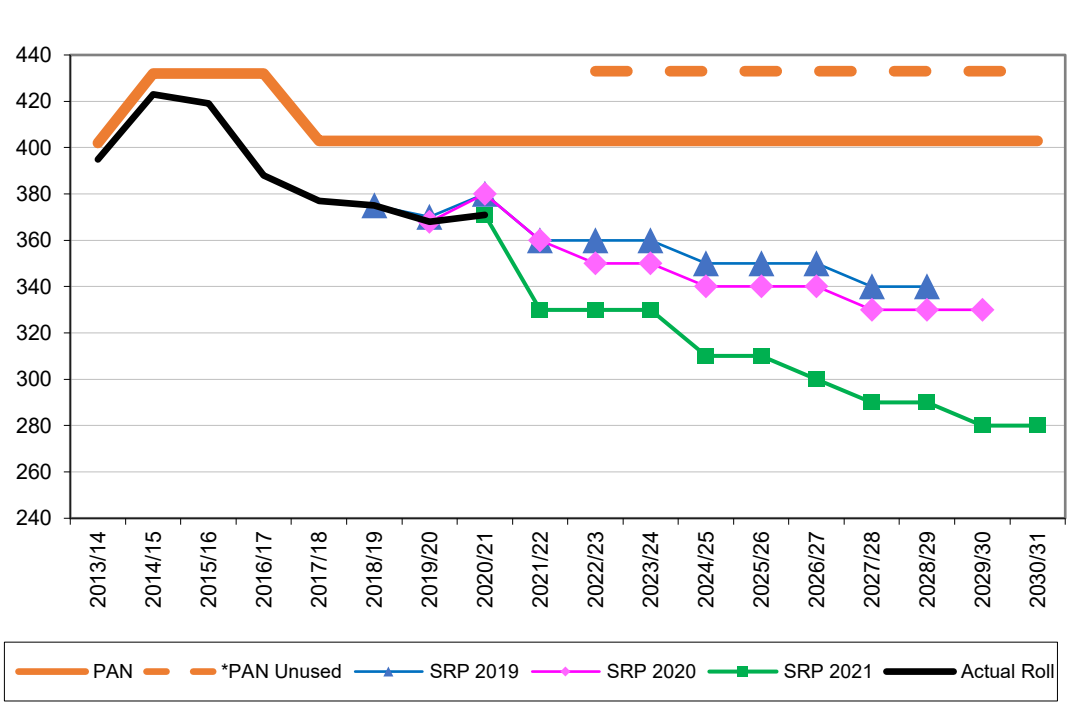
SRP 2021 = Projections received June 2020 with GLA 2019-Based Population Projections, Camden Development
SRP 2020 = Projections received June 2020 with GLA 2018-Based Population Projections, Camden Development
SRP 2019 = Projections received May 2019 with GLA 2017-Based Population Projections, Camden Development
Actuals = PAN: (Planned Admission Number) based on September. * PAN Unused: permanently unused school capacity shown for illustration only i.e. 1FE Kingsgate. Actual School Rolls: based on children attending by national curriculum year group from the January DfE School Census.
Forecasts SRP = GLA school roll forecasts should be treated with caution, estimates change/not actuals, therefore are rounded to nearest 10 to avoid misinterpretation.

Appendix B, Table 7A

2013/14 Bulge Places (+30): +30 Kingsgate
2014/15 Bulge Places (+60): +30 Hampstead Parochial/+30 Kingsgate
2015/16 Bulge Places (+60): +60 Kingsgate
2016/17 Permanent Places (+60): +60 Kingsgate
2017/18 Permanent Places (-29): +1 Christ Church NW3/-30 Kingsgate

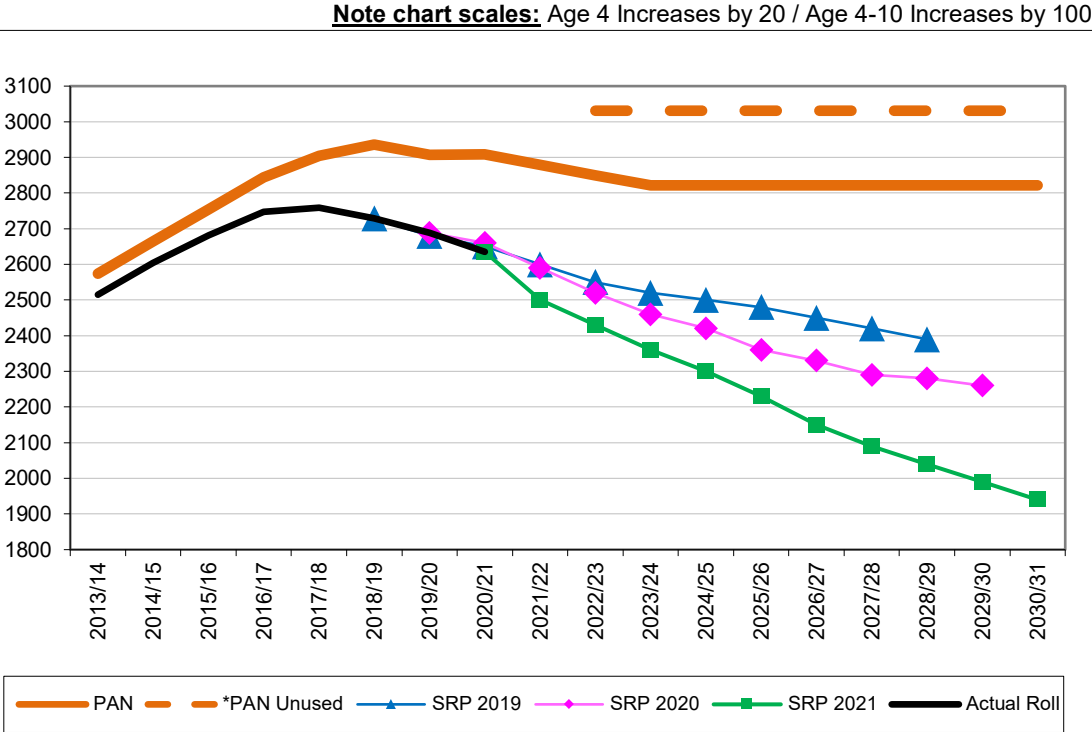
GLA Forecast: children aged 4 years old/reception

PA1	PAN	*PAN Unused	Actual Roll	SRP 2019	SRP 2020	SRP 2021	No. Surplus/Deficit		% Surplus/Deficit	
							PAN	*PAN Unused	PAN	*PAN Unused
2013/14	402		395				7		1.7%	
2014/15	432		423				9		2.1%	
2015/16	432		419				13		3.0%	
2016/17	432		388				44		10.2%	
2017/18	403		377				26		6.5%	
2018/19	403		375	375			28		6.9%	
2019/20	403		368	370	368		35		8.7%	
2020/21	403		371	380	380	371	32		7.9%	
2021/22	403			360	360	330	73		18%	
2022/23	403	433		360	350	330	73	103	18%	24%
2023/24	403	433		360	350	330	73	103	18%	24%
2024/25	403	433		350	340	310	93	123	23%	28%
2025/26	403	433		350	340	310	93	123	23%	28%
2026/27	403	433		350	340	300	103	133	26%	31%
2027/28	403	433		340	330	290	113	143	28%	33%
2028/29	403	433		340	330	290	113	143	28%	33%
2029/30	403	433			330	280	123	153	31%	35%
2030/31	403	433				280	123	153	31%	35%



GLA Forecast: children aged 4 to 10 years old/reception to year 6

PA1	PAN	*PAN Unused	Actual Roll	SRP 2019	SRP 2020	SRP 2021	No. Surplus/Deficit		% Surplus/Deficit	
							PAN	*PAN Unused	PAN	*PAN Unused
2013/14	2,574		2,515				59		2.3%	
2014/15	2,664		2,604				60		2.3%	
2015/16	2,754		2,682				72		2.6%	
2016/17	2,844		2,747				97		3.4%	
2017/18	2,905		2,759				146		5.0%	
2018/19	2,936		2,729	2,729			207		7.1%	
2019/20	2,907		2,688	2,680	2,688		219		7.5%	
2020/21	2,908		2,635	2,650	2,660	2,635	273		9.4%	
2021/22	2,879			2,600	2,590	2,500	379		13%	
2022/23	2,850	3,031		2,550	2,520	2,430	420	601	15%	20%
2023/24	2,821	3,031		2,520	2,460	2,360	461	671	16%	22%
2024/25	2,821	3,031		2,500	2,420	2,300	521	731	18%	24%
2025/26	2,821	3,031		2,480	2,360	2,230	591	801	21%	26%
2026/27	2,821	3,031		2,450	2,330	2,150	671	881	24%	29%
2027/28	2,821	3,031		2,420	2,290	2,090	731	941	26%	31%
2028/29	2,821	3,031		2,390	2,280	2,040	781	991	28%	33%
2029/30	2,821	3,031			2,260	1,990	831	1,041	29%	34%
2030/31	2,821	3,031				1,940	881	1,091	31%	36%



Note chart scales: Age 4 Increases by 20 / Age 4-10 Increases by 100

Camden Planning Area 2 (North East) GLA School Roll Projections: Primary Age Forecasts

SRP 2021 = Projections received June 2020 with GLA 2019-Based Population Projections, Camden Development
SRP 2020 = Projections received June 2020 with GLA 2018-Based Population Projections, Camden Development
SRP 2019 = Projections received May 2019 with GLA 2017-Based Population Projections, Camden Development
Actuals = PAN: (Planned Admission Number) based on September. * PAN Unused: permanently unused school capacity shown for illustration only i.e. 0.5FE St Dominic's. Actual School Rolls: based on children attending by national curriculum year group from the January DfE School Census.
Forecasts SRP = GLA school roll forecasts should be treated with caution, estimates change/not actuals, therefore rounded nearest 10 to avoid misinterpretation.

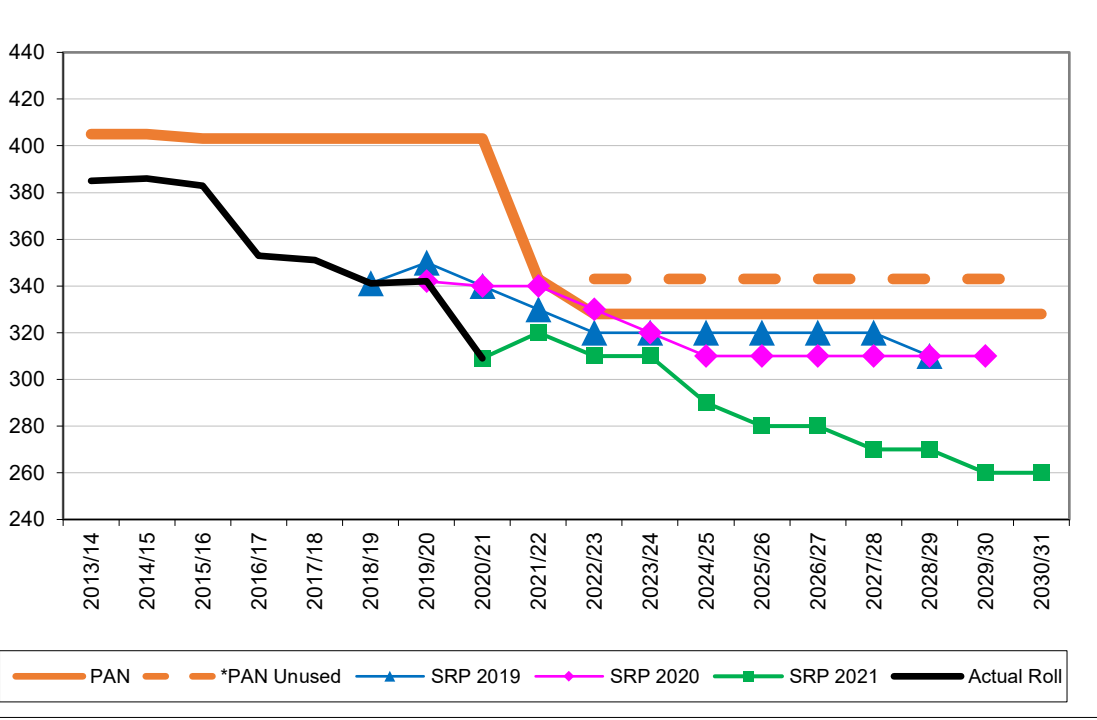
GLA Forecast: children aged 4 years old/reception

PA2	PAN	*PAN Unused	Actual Roll	SRP 2019	SRP 2020	SRP 2021	No. Surplus/Deficit		% Surplus/Deficit	
							PAN	*PAN Unused	PAN	*PAN Unused
2013/14	405		385				20		4.9%	
2014/15	405		386				19		4.7%	
2015/16	403		383				20		5.0%	
2016/17	403		353				50		12.4%	
2017/18	403		351				52		12.9%	
2018/19	403		341	341			62		15.4%	
2019/20	403		342	350	342		61		15.1%	
2020/21	403		309	340	340	309	94		23.3%	
2021/22	343			330	340	320	23		7%	
2022/23	328	343		320	330	310	18	33	5%	9.6%
2023/24	328	343		320	320	310	18	33	5%	9.6%
2024/25	328	343		320	310	290	38	53	12%	15.5%
2025/26	328	343		320	310	280	48	63	15%	18.4%
2026/27	328	343		320	310	280	48	63	15%	18.4%
2027/28	328	343		320	310	270	58	73	18%	21.3%
2028/29	328	343		310	310	270	58	73	18%	21.3%
2029/30	328	343			310	260	68	83	21%	24.2%
2030/31	328	343				260	68	83	21%	24.2%

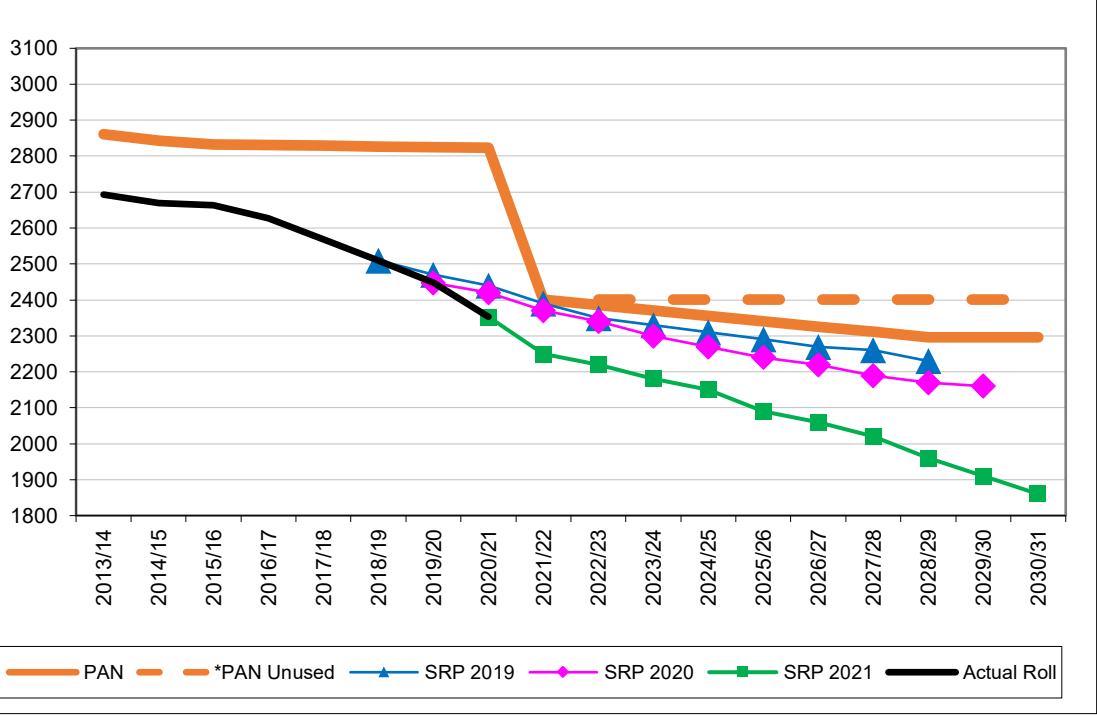
GLA Forecast: children aged 4 to 10 years old/reception to year 6

PA2	PAN	*PAN Unused	Actual Roll	SRP 2019	SRP 2020	SRP 2021	No. Surplus/Deficit		% Surplus/Deficit	
							PAN	*PAN Unused	PAN	*PAN Unused
2013/14	2,861		2,693				168		5.9%	
2014/15	2,843		2,669				174		6.1%	
2015/16	2,833		2,664				169		6.0%	
2016/17	2,831		2,627				204		7.2%	
2017/18	2,829		2,568				261		9.2%	
2018/19	2,827		2,510	2,510			317		11.2%	
2019/20	2,825		2,447	2,470	2,447		378		13.4%	
2020/21	2,823		2,353	2,440	2,420	2,353	470		16.6%	
2021/22	2,401			2,390	2,370	2,250	151		6%	
2022/23	2,386	2,401		2,350	2,340	2,220	166	181	7%	7.5%
2023/24	2,371	2,401		2,330	2,300	2,180	191	221	8%	9.2%
2024/25	2,356	2,401		2,310	2,270	2,150	206	251	9%	10.5%
2025/26	2,341	2,401		2,290	2,240	2,090	251	311	11%	13.0%
2026/27	2,326	2,401		2,270	2,220	2,060	266	341	11%	14.2%
2027/28	2,311	2,401		2,260	2,190	2,020	291	381	13%	15.9%
2028/29	2,296	2,401		2,230	2,170	1,960	336	441	15%	18.4%
2029/30	2,296	2,401			2,160	1,910	386	491	17%	20.4%
2030/31	2,296	2,401				1,860	436	541	19%	22.5%

Appendix B, Table 7B
2015/16 Permanent Places (-2): -2 Torriano
2019/20 Temporary Capping Not Shown (-30): -30 Carlton
2021/22 CLOSURE Permanent Places (-60): -60 All years Carlton
2022/23 Permanent Places (-15): -15 St Dominic's



Note chart scales: Age 4 Increases by 20 / Age 4-10 Increases by 100



Camden Planning Area 3 (Central) GLA School Roll Projections: Primary Age Forecasts

SRP 2021 = Projections received June 2020 with GLA 2019-Based Population Projections, Camden Development
SRP 2020 = Projections received June 2020 with GLA 2018-Based Population Projections, Camden Development
SRP 2019 = Projections received May 2019 with GLA 2017-Based Population Projections, Camden Development
Actuals = PAN: (Planned Admission Number) based on September. Actual School Rolls: based on children attending by national curriculum year group from the January DfE School Census.
Forecasts SRP = GLA school roll forecasts should be treated with caution, estimates change/not actuals, therefore rounded nearest 10 to avoid misinterpretation.

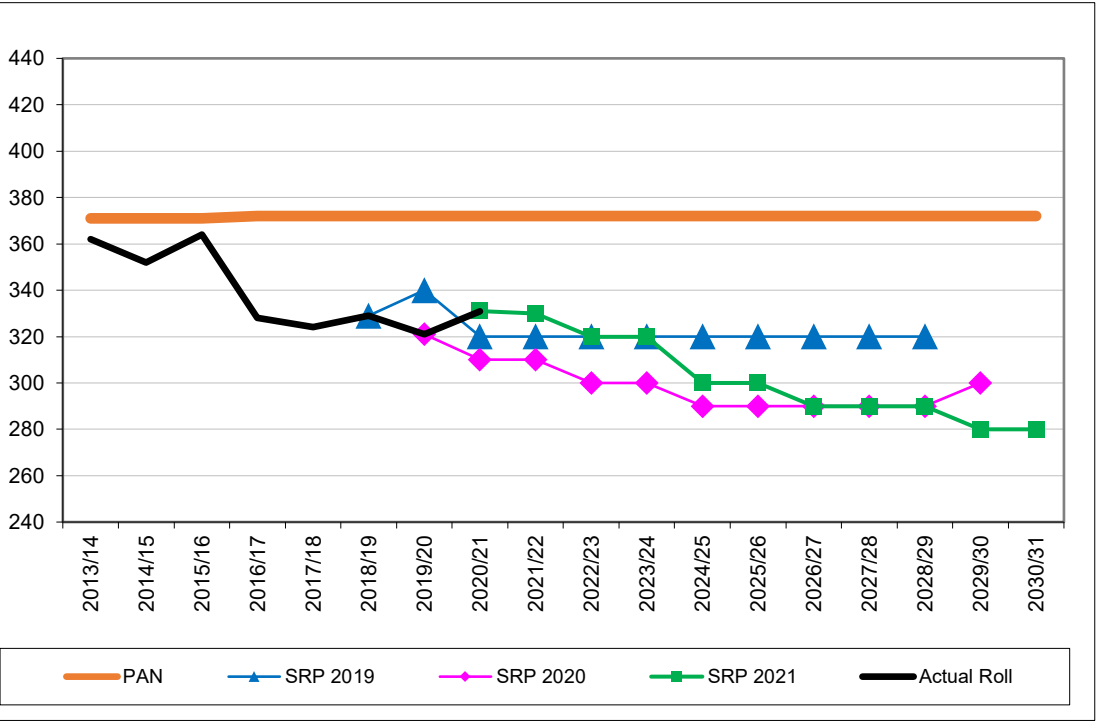
Appendix B, Table 7C

2013/14 Permanent Places (+30): +30 Abacus Belsize
2016/17 Permanent Places (+1/+30): +1 R-YR2 & +30 YR3-YR6 Hawley
2019/20 Temporary Capping Not Shown (-30): -30 Rhyl

GLA Forecast: children aged 4 years old/reception

PA3	PAN	Actual Roll	SRP 2019	SRP 2020	SRP 2021	Surplus/Deficit PAN	%Surplus/Deficit PAN
2013/14	371	362				9	2.4%
2014/15	371	352				19	5.1%
2015/16	371	364				7	1.9%
2016/17	372	328				44	11.8%
2017/18	372	324				48	12.9%
2018/19	372	329	329			43	11.6%
2019/20	372	321	340	321		51	13.7%
2020/21	372	331	320	310	331	41	11.0%
2021/22	372		320	310	330	42	11%
2022/23	372		320	300	320	52	14%
2023/24	372		320	300	320	52	14%
2024/25	372		320	290	300	72	19%
2025/26	372		320	290	300	72	19%
2026/27	372		320	290	290	82	22%
2027/28	372		320	290	290	82	22%
2028/29	372		320	290	290	82	22%
2029/30	372			300	280	92	25%
2030/31	372				280	92	25%

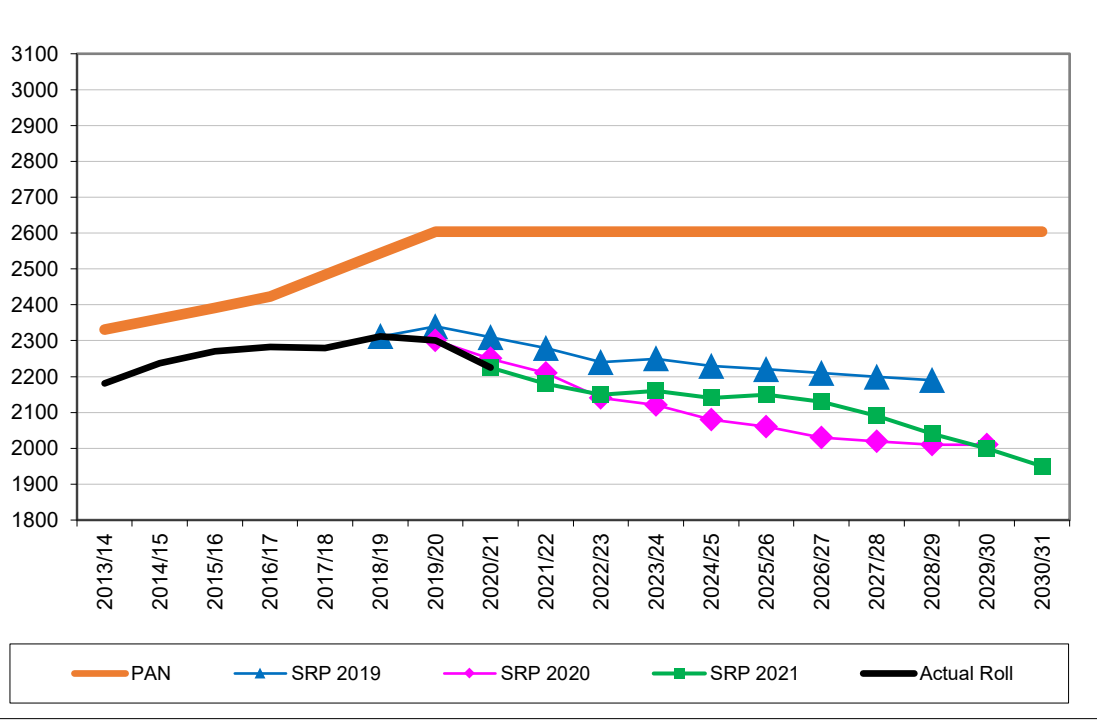
NB: Abacus Belsize located temporarily in PA4, admission point remains largely in PA3



GLA Forecast: children aged 4 to 10 years old/reception to year 6

PA3	PAN	Actual Roll	SRP 2019	SRP 2020	SRP 2021	Surplus/Deficit PAN	%Surplus/Deficit PAN
2013/14	2,331	2,181				150	6.4%
2014/15	2,361	2,237				124	5.3%
2015/16	2,391	2,270				121	5.1%
2016/17	2,424	2,283				141	5.8%
2017/18	2,484	2,280				204	8.2%
2018/19	2,544	2,312	2,312			232	9.1%
2019/20	2,604	2,301	2,340	2,301		303	11.6%
2020/21	2,604	2,225	2,310	2,250	2,225	379	14.6%
2021/22	2,604		2,280	2,210	2,180	424	16%
2022/23	2,604		2,240	2,140	2,150	454	17%
2023/24	2,604		2,250	2,120	2,160	444	17%
2024/25	2,604		2,230	2,080	2,140	464	18%
2025/26	2,604		2,220	2,060	2,150	454	17%
2026/27	2,604		2,210	2,030	2,130	474	18%
2027/28	2,604		2,200	2,020	2,090	514	20%
2028/29	2,604		2,190	2,010	2,040	564	22%
2029/30	2,604			2,010	2,000	604	23%
2030/31	2,604				1,950	654	25%

Note chart scales: Age 4 Increases by 20 / Age 4-10 Increases by 100



Camden Planning Areas 1-3 (North-Central) GLA School Roll Projections: Primary Age Forecasts

SRP 2021 = Projections received June 2020 with GLA 2019-Based Population Projections, Camden Development
SRP 2020 = Projections received June 2020 with GLA 2018-Based Population Projections, Camden Development
SRP 2019 = Projections received May 2019 with GLA 2017-Based Population Projections, Camden Development
Actuals = PAN: (Planned Admission Number) based on September. * PAN Unused: permanently unused school capacity shown for illustration only i.e. 1FE Kingsgate & 0.5FE St Dominic's. Actual School Rolls: based on children attending national curriculum year group in January DfE School Census.
Forecasts SRP = GLA school roll forecasts should be treated with caution, estimates are likely to change and are not actuals, therefore are rounded to nearest 10 to avoid misinterpretation. Summed forecast totals for; PA1-3 total and Borough total are calculated from original numbers, before being rounded to nearest 10.

GLA Forecast: children aged 4 years old/reception

PA1,2,3	PAN	*PAN Unused	Actual Roll	SRP 2019	SRP 2020	SRP 2021	No. Surplus/Deficit		% Surplus/Deficit	
							PAN	*PAN Unused	PAN	*PAN Unused
2013/14	1,178		1,142				36		3.1%	
2014/15	1,208		1,161				47		3.9%	
2015/16	1,206		1,166				40		3.3%	
2016/17	1,207		1,069				138		11.4%	
2017/18	1,178		1,052				126		10.7%	
2018/19	1,178		1,045	1,045			133		11.3%	
2019/20	1,178		1,031	1,050	1,031		147		12.5%	
2020/21	1,178		1,011	1,040	1,040	1,011	167		14.2%	
2021/22	1,118			1,010	1,010	970	148		13.2%	
2022/23	1,103	1,148		1,000	970	960	143	188	13.0%	16%
2023/24	1,103	1,148		1,000	960	950	153	198	13.9%	17%
2024/25	1,103	1,148		990	940	900	203	248	18.4%	22%
2025/26	1,103	1,148		980	940	880	223	268	20.2%	23%
2026/27	1,103	1,148		980	930	870	233	278	21.1%	24%
2027/28	1,103	1,148		970	940	850	253	298	22.9%	26%
2028/29	1,103	1,148		970	940	840	263	308	23.8%	27%
2029/30	1,103	1,148			940	820	283	328	25.7%	29%
2030/31	1,103	1,148				810	293	338	26.6%	29%

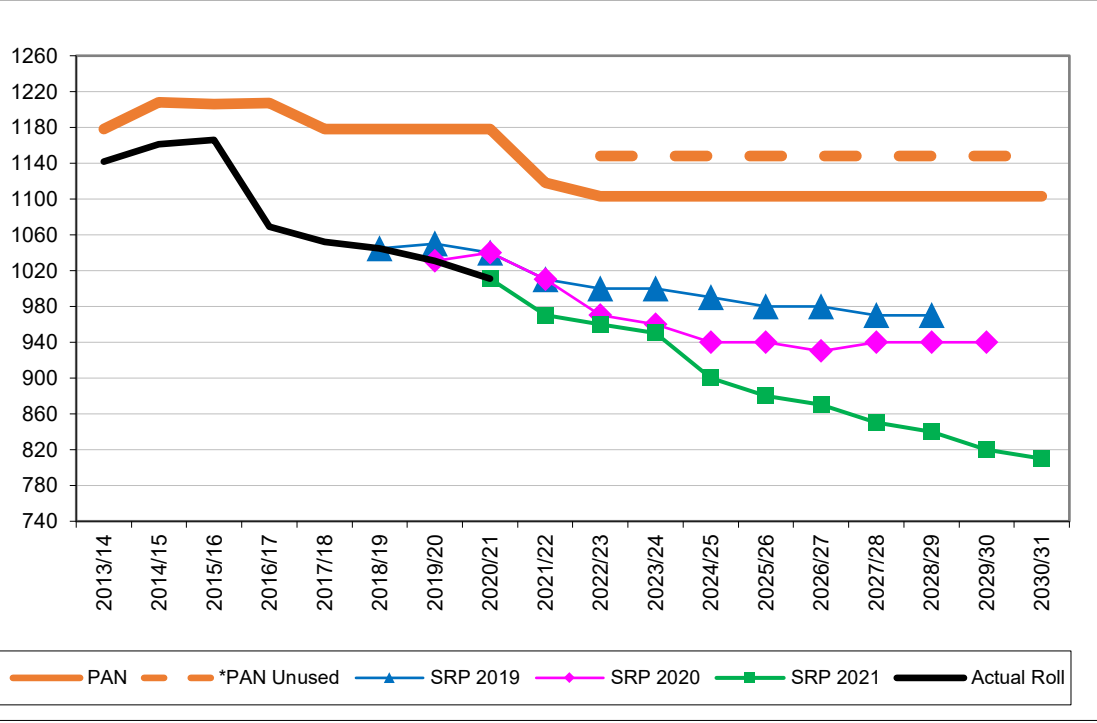
GLA Forecast: children aged 4 to 10 years old/reception to year 6

PA1,2,3	PAN	*PAN Unused	Actual Roll	SRP 2019	SRP 2020	SRP 2021	No. Surplus/Deficit		% Surplus/Deficit	
							PAN	*PAN Unused	PAN	*PAN Unused
2013/14	7,766		7,389				377		4.9%	
2014/15	7,868		7,510				358		4.6%	
2015/16	7,978		7,616				362		4.5%	
2016/17	8,099		7,657				442		5.5%	
2017/18	8,218		7,607				611		7.4%	
2018/19	8,307		7,551	7,551			756		9.1%	
2019/20	8,336		7,436	7,480	7,436		900		10.8%	
2020/21	8,335		7,213	7,400	7,330	7,213	1122		13.5%	
2021/22	7,884			7,270	7,160	6,930	954		12.1%	
2022/23	7,840	8,036		7,140	6,990	6,800	1040	1236	13.3%	15%
2023/24	7,796	8,036		7,090	6,880	6,700	1096	1336	14.1%	17%
2024/25	7,781	8,036		7,040	6,770	6,590	1191	1446	15.3%	18%
2025/26	7,766	8,036		7,000	6,660	6,470	1296	1566	16.7%	19%
2026/27	7,751	8,036		6,930	6,580	6,330	1421	1706	18.3%	21%
2027/28	7,736	8,036		6,880	6,500	6,190	1546	1846	20.0%	23%
2028/29	7,721	8,036		6,820	6,450	6,040	1681	1996	21.8%	25%
2029/30	7,721	8,036			6,430	5,890	1831	2146	23.7%	27%
2030/31	7,721	8,036				5,750	1971	2286	25.5%	28%

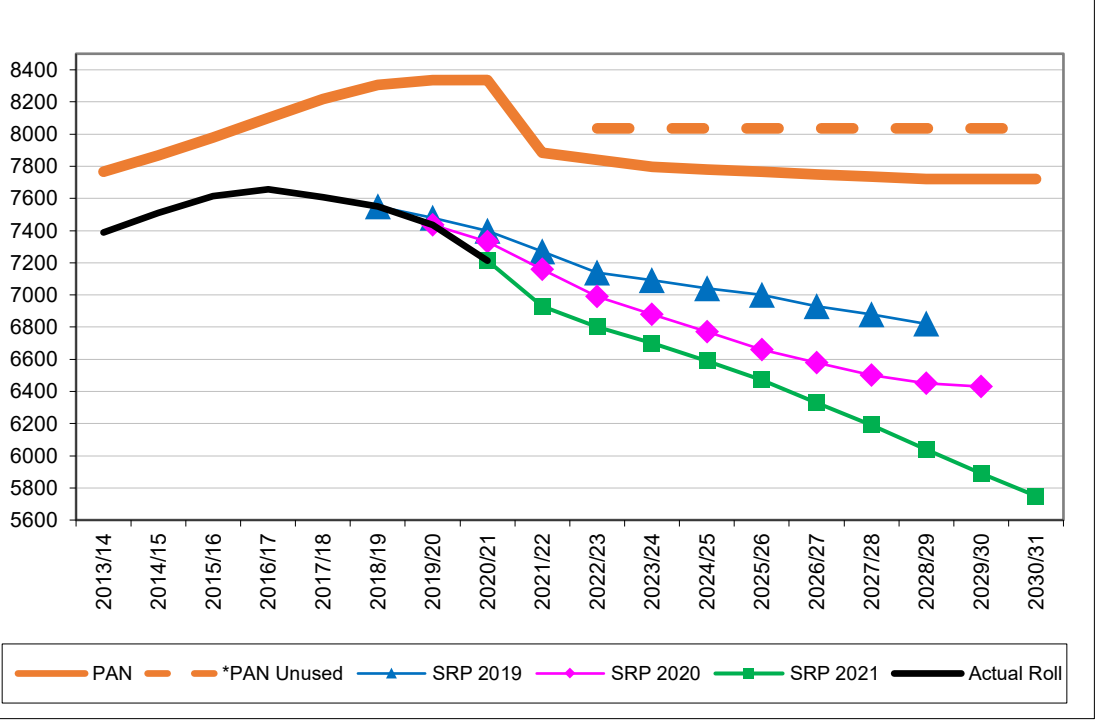
Appendix B, Table 7D

- 2013/14 Bulge Places (+30): +30 Kingsgate (PA1)
- 2013/14 Permanent Places (+30): +30 Abacus Belsize (PA3)
- 2014/15 Bulge Places (+60): +30 Hampstead Parochial/+30 Kingsgate (PA1)
- 2015/16 Bulge Places (+60): +60 Kingsgate (PA1)
- 2015/16 Permanent Places (-2): -2 Torriano (PA2)
- 2016/17 Permanent Places (+60): +60 Kingsgate (PA1)
- 2016/17 Permanent Places (+1/+30): +1 R-YR2 & +30 YR3-YR6 Hawley (PA3)
- 2017/18 Permanent Places (-29): +1 Christ Church NW3/-30 Kingsgate (PA1)
- 2019/20 Temporary Capping Not Shown (-60): -30 Carlton (PA2) & -30 Rhyl (PA3)
- 2021/22 CLOSURE Permanent Places (-60): -60 All years Carlton (PA2)
- 2022/23 Permanent Places (-15): -15 St Dominic's (PA2)

NB: Abacus Belsize located temporarily in PA4, admission point remains largely in PA3



Note chart scales: Age 4 Increases by 40 / Age 4-10 Increases by 200



Camden Planning Area 4 (South) GLA School Roll Projections: Primary Age Forecasts

SRP 2021 = Projections received June 2020 with GLA 2019-Based Population Projections, Camden Development
SRP 2020 = Projections received June 2020 with GLA 2018-Based Population Projections, Camden Development
SRP 2019 = Projections received May 2019 with GLA 2017-Based Population Projections, Camden Development
Actuals = PAN: (Planned Admission Number) based on September. * PAN Unused: permanently unused school capacity shown for illustration only i.e. 0.5FE Netley. Actual School Rolls: based on children attending by national curriculum year group from the January DfE School Census.
Forecasts SRP = GLA school roll forecasts should be treated with caution, estimates change/not actuals, therefore rounded nearest 10 to avoid misinterpretation.

GLA Forecast: children aged 4 years old/reception

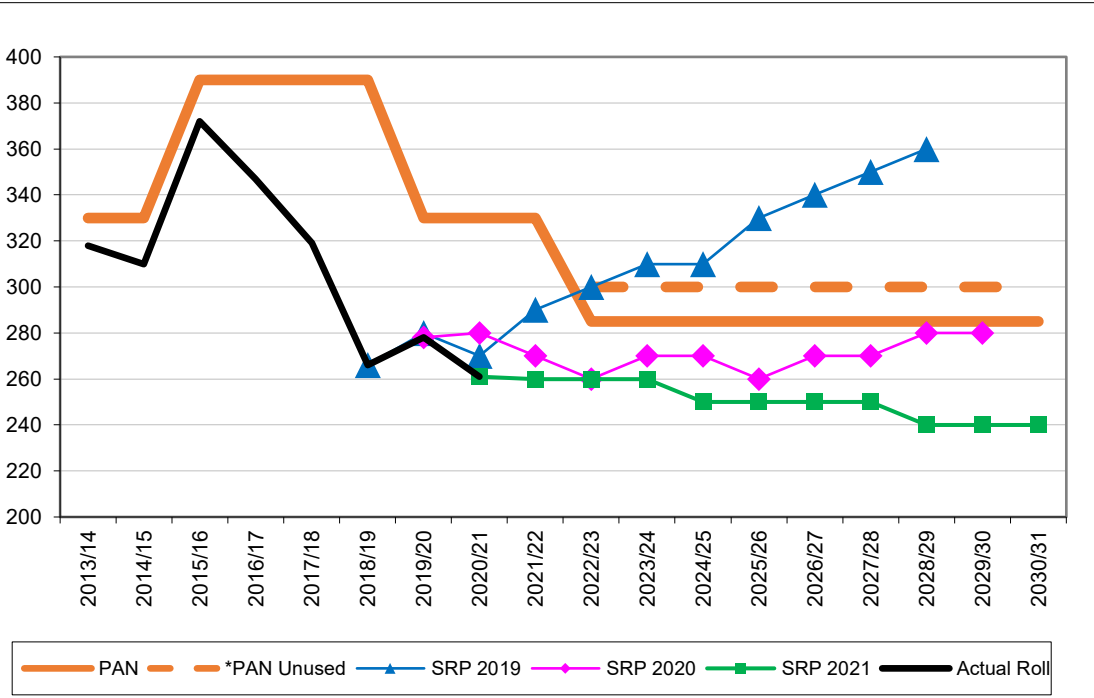
PA4	PAN	*PAN Unused	Actual Roll	SRP 2019	SRP 2020	SRP 2021	No. Surplus/Deficit		% Surplus/Deficit	
							PAN	*PAN Unused	PAN	*PAN Unused
2013/14	330		318				12		3.6%	
2014/15	330		310				20		6.1%	
2015/16	390		372				18		4.6%	
2016/17	390		347				43		11.0%	
2017/18	390		319				71		18.2%	
2018/19	390		266	266			124		31.8%	
2019/20	330		278	280	278		52		15.8%	
2020/21	330		261	270	280	261	69		20.9%	
2021/22	330			290	270	260	70		21%	
2022/23	285	300		300	260	260	25	40	9%	13.3%
2023/24	285	300		310	270	260	25	40	9%	13.3%
2024/25	285	300		310	270	250	35	50	12%	16.7%
2025/26	285	300		330	260	250	35	50	12%	16.7%
2026/27	285	300		340	270	250	35	50	12%	16.7%
2027/28	285	300		350	270	250	35	50	12%	16.7%
2028/29	285	300		360	280	240	45	60	16%	20.0%
2029/30	285	300			280	240	45	60	16%	20.0%
2030/31	285	300				240	45	60	16%	20.0%

GLA Forecast: children aged 4 to 10 years old/reception to year 6

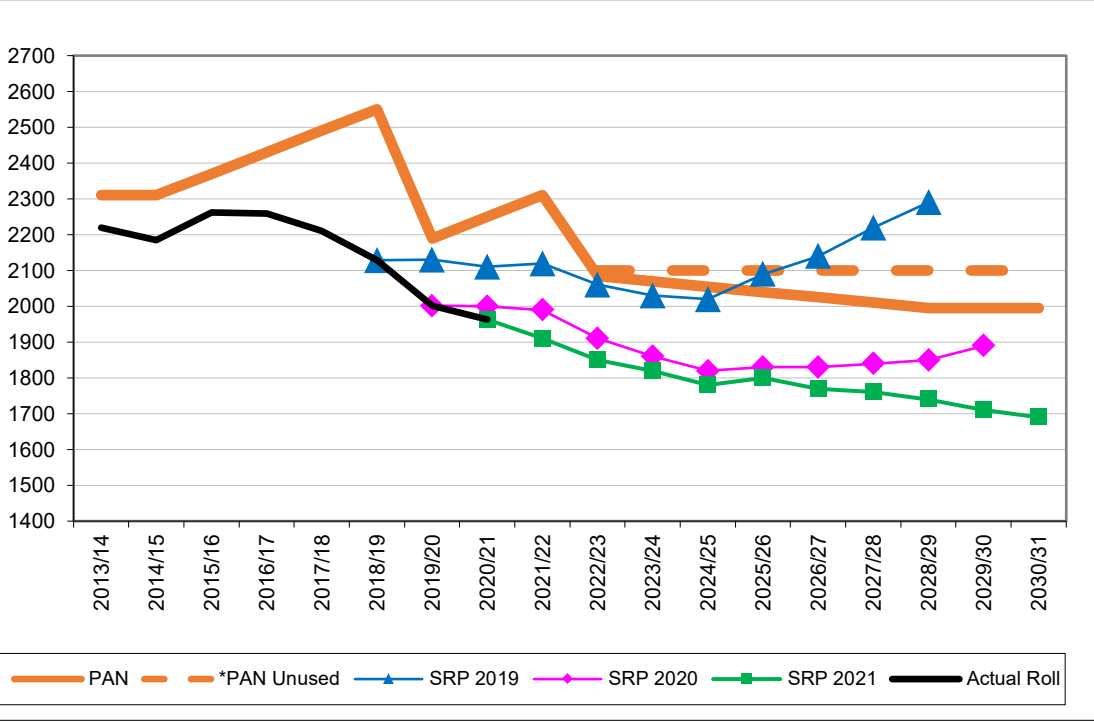
PA4	PAN	*PAN Unused	Actual Roll	SRP 2019	SRP 2020	SRP 2021	No. Surplus/Deficit		% Surplus/Deficit	
							PAN	*PAN Unused	PAN	*PAN Unused
2013/14	2,310		2,219				91		3.9%	
2014/15	2,310		2,185				125		5.4%	
2015/16	2,370		2,262				108		4.6%	
2016/17	2,430		2,259				171		7.0%	
2017/18	2,490		2,211				279		11.2%	
2018/19	2,550		2,129	2,129			421		16.5%	
2019/20	2,190		2,002	2,130	2,002		188		8.6%	
2020/21	2,250		1,963	2,110	2,000	1,963	287		12.8%	
2021/22	2,310			2,120	1,990	1,910	400		17%	
2022/23	2,085	2,100		2,060	1,910	1,850	235	250	11%	11.9%
2023/24	2,070	2,100		2,030	1,860	1,820	250	280	12%	13.3%
2024/25	2,055	2,100		2,020	1,820	1,780	275	320	13%	15.2%
2025/26	2,040	2,100		2,090	1,830	1,800	240	300	12%	14.3%
2026/27	2,025	2,100		2,140	1,830	1,770	255	330	13%	15.7%
2027/28	2,010	2,100		2,220	1,840	1,760	250	340	12%	16.2%
2028/29	1,995	2,100		2,290	1,850	1,740	255	360	13%	17.1%
2029/30	1,995	2,100			1,890	1,710	285	390	14%	18.6%
2030/31	1,995	2,100				1,690	305	410	15%	19.5%

Appendix B, Table 7E

2015/16 Permanent Places (+60): +60 King's Cross Academy
2019/20 **CLOSURE** Permanent Places (-60): -60 **All** years St Aloysius
2022/23 **CLOSURE** Permanent Places (-30): -30 **All** years St Michael's
2022/23 Permanent Places (-15): -15 Netley



Note chart scales: Age 4 Increases by 20 / Age 4-10 Increases by 100



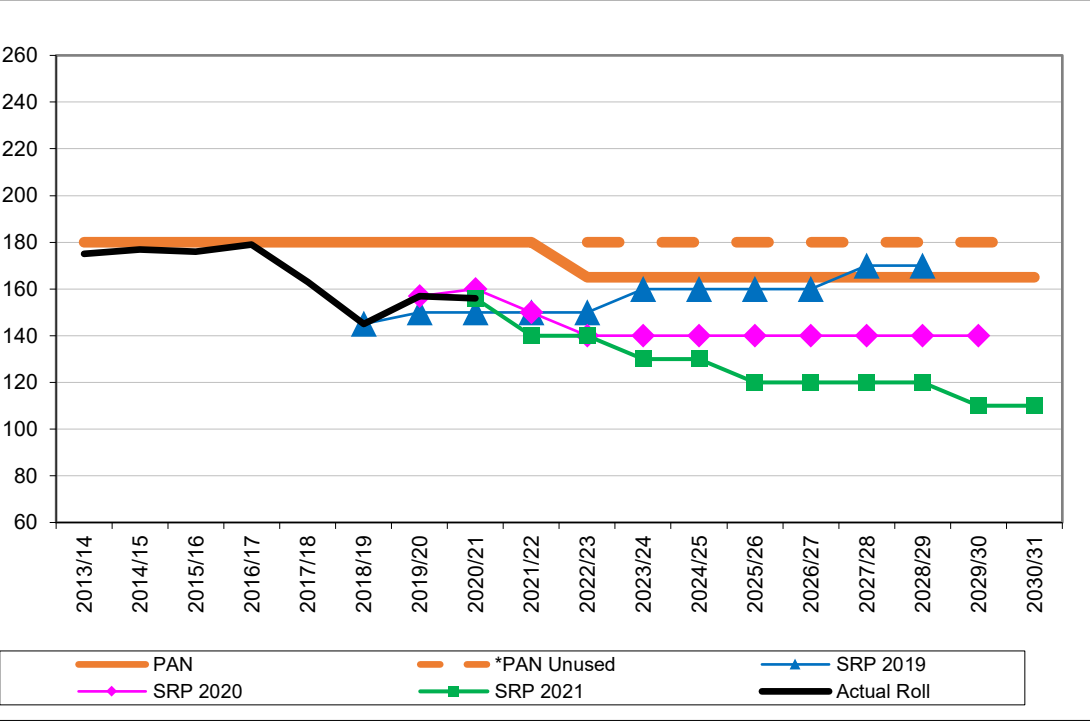
Camden Planning Area 5 (South of Euston Road) GLA School Roll Projections: Primary Age Forecasts

SRP 2021 = Projections received June 2020 with GLA 2019-Based Population Projections, Camden Development
SRP 2020 = Projections received June 2020 with GLA 2018-Based Population Projections, Camden Development
SRP 2019 = Projections received May 2019 with GLA 2017-Based Population Projections, Camden Development
Actuals = PAN: (Planned Admission Number) based on September. * PAN Unused: permanently unused school capacity shown for illustration only i.e. 0.5FE Argyle. Actual School Rolls: based on children attending by national curriculum year group from the January DfE School Census.
Forecasts SRP = GLA school roll forecasts should be treated with caution, estimates change/not actuals, therefore rounded nearest 10 to avoid misinterpretation.

Appendix B, Table 7F
2022/23 Permanent Places (-15): -15 Argyle

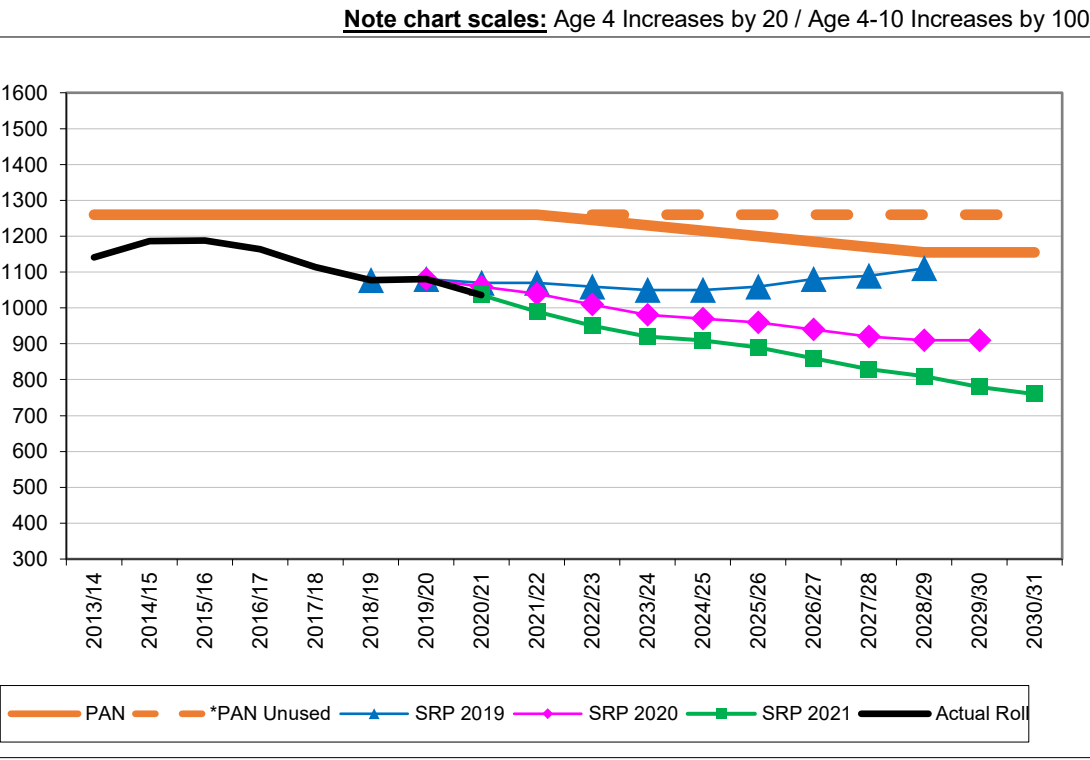
GLA Forecast: children aged 4 years old/reception

PA5	PAN	*PAN Unused	Actual Roll	SRP 2019	SRP 2020	SRP 2021	No. Surplus/Deficit		% Surplus/Deficit	
							PAN	*PAN Unused	PAN	*PAN Unused
2013/14	180		175				5		2.8%	
2014/15	180		177				3		1.7%	
2015/16	180		176				4		2.2%	
2016/17	180		179				1		0.6%	
2017/18	180		163				17		9.4%	
2018/19	180		145	145			35		19.4%	
2019/20	180		157	150	157		23		12.8%	
2020/21	180		156	150	160	156	24		13.3%	
2021/22	180			150	150	140	40		22%	
2022/23	165	180		150	140	140	25	40	15%	22.2%
2023/24	165	180		160	140	130	35	50	21%	27.8%
2024/25	165	180		160	140	130	35	50	21%	27.8%
2025/26	165	180		160	140	120	45	60	27%	33.3%
2026/27	165	180		160	140	120	45	60	27%	33.3%
2027/28	165	180		170	140	120	45	60	27%	33.3%
2028/29	165	180		170	140	120	45	60	27%	33.3%
2029/30	165	180			140	110	55	70	33%	38.9%
2030/31	165	180				110	55	70	33%	38.9%



GLA Forecast: children aged 4 to 10 years old/reception to year 6

PA5	PAN	*PAN Unused	Actual Roll	SRP 2019	SRP 2020	SRP 2021	No. Surplus/Deficit		% Surplus/Deficit	
							PAN	*PAN Unused	PAN	*PAN Unused
2013/14	1,260		1,141				119		9.4%	
2014/15	1,260		1,186				74		5.9%	
2015/16	1,260		1,188				72		5.7%	
2016/17	1,260		1,163				97		7.7%	
2017/18	1,260		1,114				146		11.6%	
2018/19	1,260		1,077	1,077			183		14.5%	
2019/20	1,260		1,080	1,080	1,080		180		14.3%	
2020/21	1,260		1,036	1,070	1,060	1,036	224		17.8%	
2021/22	1,260			1,070	1,040	990	270		21%	
2022/23	1,245	1,260		1,060	1,010	950	295	310	24%	24.6%
2023/24	1,230	1,260		1,050	980	920	310	340	25%	27.0%
2024/25	1,215	1,260		1,050	970	910	305	350	25%	27.8%
2025/26	1,200	1,260		1,060	960	890	310	370	26%	29.4%
2026/27	1,185	1,260		1,080	940	860	325	400	27%	31.7%
2027/28	1,170	1,260		1,090	920	830	340	430	29%	34.1%
2028/29	1,155	1,260		1,110	910	810	345	450	30%	35.7%
2029/30	1,155	1,260			910	780	375	480	32%	38.1%
2030/31	1,155	1,260				760	395	500	34%	39.7%



Note chart scales: Age 4 Increases by 20 / Age 4-10 Increases by 100

Camden Borough GLA School Roll Projections: Primary Age Forecasts

SRP 2021 = Projections received June 2020 with GLA 2019-Based Population Projections, Camden Development
SRP 2020 = Projections received June 2020 with GLA 2018-Based Population Projections, Camden Development
SRP 2019 = Projections received May 2019 with GLA 2017-Based Population Projections, Camden Development
Actuals = PAN: (Planned Admission Number) based on September. * PAN Unused: permanently unused school capacity shown for illustration only i.e. 1FE Kingsgate & 0.5FE St Dominic's & 0.5FE Netley & 0.5FE Argyle. Actual School Rolls: based on children attending national curriculum year group in January DfE School Census.
Forecasts SRP = GLA school roll forecasts should be treated with caution, estimates are likely to change and are not actuals, therefore are rounded to nearest 10 to avoid misinterpretation. Summed forecast totals for; PA1-3 total and Borough total are calculated from original numbers, before being rounded to nearest 10.
NB: Abacus Belsize located temporarily in PA4, admission point remains largely in PA3

GLA Forecast: children aged 4 years old/reception

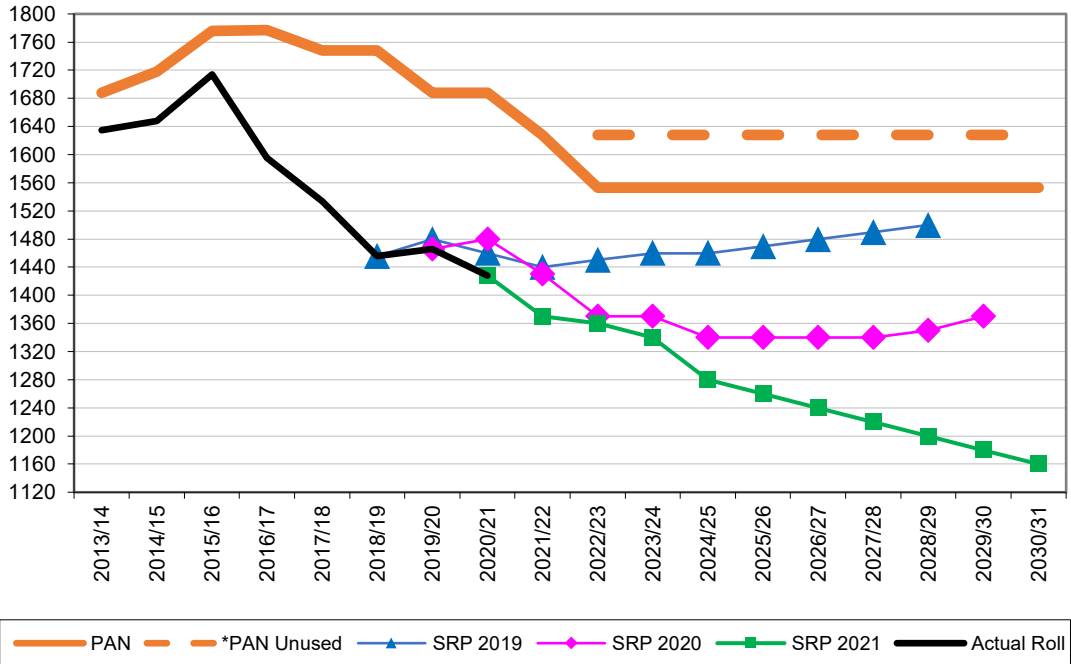
Borough	PAN	*PAN Unused	Actual Roll	SRP 2019	SRP 2020	SRP 2021	No. Surplus/Deficit		% Surplus/Deficit	
							PAN	*PAN Unused	PAN	*PAN Unused
2013/14	1,688		1,635				53		3.1%	
2014/15	1,718		1,648				70		4.1%	
2015/16	1,776		1,714				62		3.5%	
2016/17	1,777		1,595				182		10.2%	
2017/18	1,748		1,534				214		12.2%	
2018/19	1,748		1,456	1,456			292		16.7%	
2019/20	1,688		1,466	1,480	1,466		222		13.2%	
2020/21	1,688		1,428	1,460	1,480	1,428	260		15.4%	
2021/22	1,628			1,440	1,430	1,370	258		16%	
2022/23	1,553	1,628		1,450	1,370	1,360	193	268	12%	16%
2023/24	1,553	1,628		1,460	1,370	1,340	213	288	14%	18%
2024/25	1,553	1,628		1,460	1,340	1,280	273	348	18%	21%
2025/26	1,553	1,628		1,470	1,340	1,260	293	368	19%	23%
2026/27	1,553	1,628		1,480	1,340	1,240	313	388	20%	24%
2027/28	1,553	1,628		1,490	1,340	1,220	333	408	21%	25%
2028/29	1,553	1,628		1,500	1,350	1,200	353	428	23%	26%
2029/30	1,553	1,628			1,370	1,180	373	448	24%	28%
2030/31	1,553	1,628				1,160	393	468	25%	29%

GLA Forecast: children aged 4 to 10 years old/reception to year 6

Borough	PAN	*PAN Unused	Actual Roll	SRP 2019	SRP 2020	SRP 2021	No. Surplus/Deficit		% Surplus/Deficit	
							PAN	*PAN Unused	PAN	*PAN Unused
2013/14	11,336		10,749				587		5.2%	
2014/15	11,438		10,881				557		4.9%	
2015/16	11,608		11,066				542		4.7%	
2016/17	11,789		11,079				710		6.0%	
2017/18	11,968		10,932				1,036		8.7%	
2018/19	12,117		10,757	10,757			1,360		11.2%	
2019/20	11,786		10,518	10,690	10,518		1,268		10.8%	
2020/21	11,845		10,212	10,580	10,390	10,212	1,633		13.8%	
2021/22	11,454			10,460	10,190	9,830	1,624		14%	
2022/23	11,170	11,396		10,250	9,920	9,600	1,570	1,796	14%	16%
2023/24	11,096	11,396		10,160	9,710	9,440	1,656	1,956	15%	17%
2024/25	11,051	11,396		10,110	9,560	9,280	1,771	2,116	16%	19%
2025/26	11,006	11,396		10,140	9,450	9,150	1,856	2,246	17%	20%
2026/27	10,961	11,396		10,150	9,350	8,970	1,991	2,426	18%	21%
2027/28	10,916	11,396		10,190	9,260	8,780	2,136	2,616	20%	23%
2028/29	10,871	11,396		10,210	9,210	8,580	2,291	2,816	21%	25%
2029/30	10,871	11,396			9,230	8,380	2,491	3,016	23%	26%
2030/31	10,871	11,396				8,200	2,671	3,196	25%	28%

Appendix B: Table 7G

2013/14 Bulge Places (+30): +30 Kingsgate (PA1)
2013/14 Permanent Places (+30): +30 Abacus Belsize (PA3)
2014/15 Bulge Places (+60): +30 Hampstead Parochial/+30 Kingsgate (PA1)
2015/16 Bulge Places (+60): +60 Kingsgate (PA1)
2015/16 Permanent Places (-2): -2 Torriano (PA2)
2015/16 Permanent Places (+60): +60 King's Cross Academy (PA4)
2016/17 Permanent Places (+60): +60 Kingsgate (PA1)
2016/17 Permanent Places (+1/+30): +1 R-YR2 & +30 YR3-YR6 Hawley (PA3)
2017/18 Permanent Places (-29): +1 Christ Church NW3/-30 Kingsgate (PA1)
2019/20 CLOSURE Permanent Places (-60): -60 All year groups St Aloysius (PA4)
2019/20 Temporary Capping Not Shown (-60): -30 Carlton (PA2) & -30 Rhyl (PA3)
2021/22 CLOSURE Permanent Places (-60): -60 All years Carlton (PA2)
2022/23 CLOSURE Permanent Places (-30): -30 All years St Michael's (PA4)
2022/23 Permanent Places (-45): -15 St Dominic's (PA2) & -15 Netley (PA4) & -15 Argyle (PA5)



Note chart scales: Age 4 Increases by 40 / Age 4-10 Increases by 200

